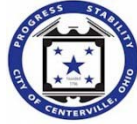


**Cornerstone of Centerville
Phase 4 Public Improvements
Centerville, Ohio 45440**



BID ADDENDUM No. 2
**Cornerstone of Centerville, North
Phase 4 On-Site Public Improvements**

Addendum Issued: [Monday, January 27, 2020 at or before 5:00 P.M.](#)

Bid Due Date: [Thursday, January 30, 2020 at ~~11:00 A.M.~~ **2:30 P.M.**](#)

Bid Location: City Municipal Building; 100 West Spring Valley Road, Centerville, Ohio

Addendum Prepared By: Robert L. Hall III, Oberer Construction Managers, Ltd.

The bidding contractors are hereby directed to include the following responses to requested information, additions, deletions, revisions, or clarifications to the specifications and drawings originally dated **December 31, 2019**, and included with the Invitation To Bid for the referenced project. This Addendum shall become part of the bid documents and the costs of such revisions shall be included in the bids. The City and its Construction Manager will not be responsible for any other explanations or interpretations of the bid documents made prior to the receipt of bids.

The bidding contractors must indicate receipt of this Addendum on the Bidder's Proposal Form in the space provided. The following requested information, additions, deletions, revisions, amendments, clarifications and modifications change the original Contract Documents only in the amount and to the extent hereinafter specified in this Addendum.

Notices:

Notice No. 1: The Bid Opening time has been revised from Thursday, January 30, 2020 at 11:00 A.M. to **Thursday, January 30, 2020 at 2:30 P.M.**

Notice No. 2: At this time, it's anticipated the project will be awarded on or before February 7, 2020.

----- **End Notices** -----

Clarifications:

Clarification No. 1: The water line on the plan and profile sheets (sheets 30-31, 43-44) is labeled DIP CI-53. The water line should be **DIP CI-52** as listed in the specifications on sheet 18.

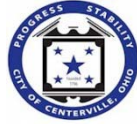
Clarification No. 2: Please reference the attached specification for Item C441, Asphalt Concrete, for clarification of standards related to RAP usage.

----- **End Clarifications** -----

Cornerstone of Centerville

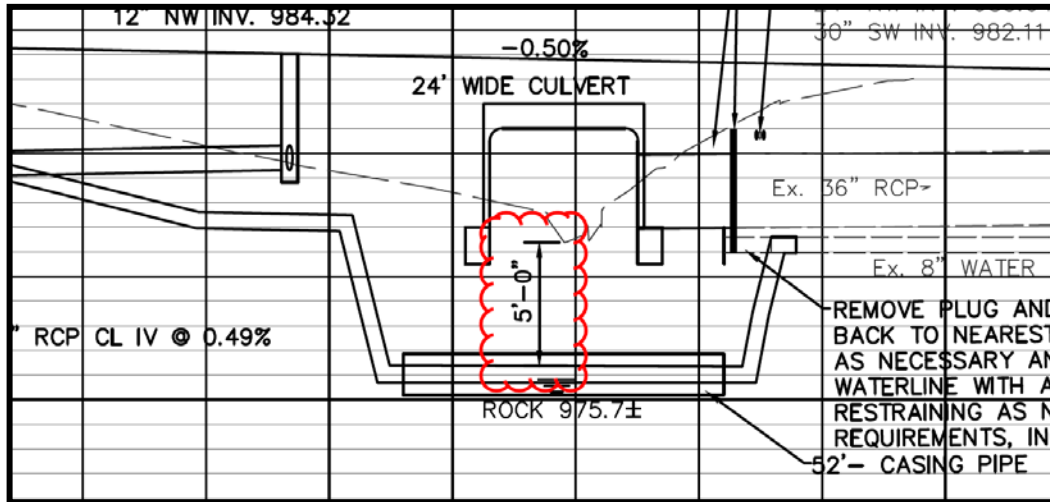
Phase 4 Public Improvements

Centerville, Ohio 45440



Plan Revisions:

Revision No. 1: The Ohio EPA is requiring 5'-0" of cover over the water line at the stream crossing, versus 4'-6". Sheet 31 of 61 has been revised to note 5'-0" of cover as captioned below and attached hereto.



----- End Plan Revisions -----

Questions and Responses:

Question 1: With the stone veneer I think a cap on the top of the precast walls will be required. Should we hold the precast walls down 4"-6" to allow for the cap?

Response 1: Yes, hold the precast walls down to allow for the installation of a 4" cap. The cap should match that used on the pilasters (Re: Pilaster Section Detail, sheet C4) and shall be 14" in width. The overall height of the walls must be a minimum of 42" above the adjacent sidewalk elevation. The estimated quantity of 4" cap is 106 sf. See attached revised Unit Price Sheet that includes Reference Number 84.1, 4" LIMESTONE CAP.

Question 2: The formliner finish will not match the stone veneer it may be better to do the entire structure in the stone veneer.

Response 2: It is understood the formliner finish will not exactly match the stone veneer on the adjacent surface. The formliner finish on the outside of the headwalls and wing walls (non-street side) is specified for maintenance and longevity.

Cornerstone of Centerville Phase 4 Public Improvements Centerville, Ohio 45440



Question 3: If formliner finish is needed, has a formliner finish been chosen?

Response 3: The formliner will be selected from one of the following manufacturers finishes. An equal or alternate may be approved as determined by the City and its Construction Manager:

- Fitzgerald Formliners: 16986LP, Georgetown Ashlar, Linear Cut Ashlar Block
- Fitzgerald Formliners: 17000 Florida Ashlar, Linear cut ashlar stone, 1" deep
- Spec Formliners; Inc.: 1506, Random Block Ashlar Stone
- Customrock Formliner: #12020 Tollway Ashlar [Keyed]

Question 4: Will integrally colored concrete be required for the headwalls and wingwalls of the culvert or will staining the precast after installation be acceptable?

Response 4: Integrally colored concrete shall be provided where the concrete formliner finish is used. Staining or painting of the concrete at the formliner finish is not required at this time.

----- End Questions and Responses -----

END BID ADDENDUM No. 2

Item C441 - Asphalt Concrete

- C441.1 Description**
- C441.2 Material**
- C441.3 General**
- C441.4 Utilities**
- C441.5 Traffic Control**
- C441.6 Basis of Payment**

C441.1 Description. This work shall consist of constructing a surface course or intermediate course of aggregate and asphalt cement mixed in a central plant and spread and compacted on a prepared surface in accordance with ODOT Item 441 of the Construction and Materials Specifications Manual, ODOT Supplemental Specification 800, in reasonably close conformity with the lines, grades and typical sections shown on the plans or established by the City Engineer, and shall include the following supplemental specifications and/or exceptions. The Contractor will be required to supply a mix design to the City detailing the requirements of the specified asphalt concrete. It is the contractor's responsibility to have all manholes and valves located prior to commencing work, so that they may be adjusted as necessary.

C441.2 Material. Materials and compositions shall meet the requirements as set forth in ODOT Item 441 of the Construction and Materials Specifications Manual. Each asphalt ticket shall show the correct ODOT specification and AC content. The use of slag is not permitted.

C441.2.1 Use of Recycled Material. The Contractor may use a blend of new materials in combination with reclaimed asphalt according to ODOT Item 401.04. A maximum percentage of reclaimed materials may be used in accordance with ODOT Item 401.04-1 Method 1-Standard RAP/RAS limits.

C441.3 General. The resurfacing shall consist of a 2- inch thick course on all asphalt streets and a 2-inch thick course on all composite/concrete streets. Asphalt streets shall have a ¾- inch thick leveling course followed by a 1-1/4-inch thick final course. Concrete streets to be overlaid shall have a ¾-inch leveling course followed by a 1-1/4-inch, more or less, finish course. The entire leveling course shall be placed prior to the finish course. The cross slope of the finish course shall be 2% unless otherwise specified. The pavement joints are to be located at least 6" from pavement markings to avoid coverage by crack sealing.

The surface on which the asphalt is to be placed shall be cleaned and maintained free of accumulations of materials that would, in the judgment of the City Engineer, contaminate the mixture, prevent bonding or interfere with spreading or compacting operations. In addition to proper cleaning of the surface to be paved, all base repair, crack seal work and joint fabric placement shall be completed and inspected by the City Engineer. No asphalt shall be placed on any surface which has not been properly repaired, crack sealed and cleaned. Caution shall be used along curbs and around utilities. It will be the Contractor's responsibility to repair curbs or utilities unnecessarily damaged during the paving operation. Upon completion of final paving and edge sealing, any remaining construction debris shall be cleaned from the roadway.

Where the asphalt overlay will end at an existing asphalt pavement, a minimum ¾-inch butt joint is required as part of Item C254. The overlay shall create a joint as described in ODOT Item 401.17. Where the existing pavement is concrete, the end joint may be feathered to meet the existing grade. The last 8-inches of the feathered end shall be heavily sealed with AC and shall be covered with finely graded aggregate.

Prior to placing the asphalt overlay, all vertical faces shall be cleaned and coated with asphalt material in accordance with ODOT Item 401.14.

The new asphalt concrete surface shall be compacted uniformly using a combination of a steel wheel roller and a pneumatic tire roller in accordance with ODOT Items 401.13 and 401.16.

The limits of the new Item C441 surface shall be sealed with a 4-inch ribbon of AC, except as noted above in accordance with Item C423. A finely graded aggregate or sand shall be spread over the AC ribbon in front of driveways, handicap ramps and mailboxes as directed by the City Engineer.

Ragged edges will not be permitted. The Contractor shall exercise care so that the edges of the asphalt will be smooth and even.

Where reconstruction of an asphalt driveway is required, the price bid for this item shall include placement of up to 4" of ODOT Item 304 crushed limestone, the construction of a 4 inch minimum thickness asphalt driveway (with the asphalt being placed in two layers) and all work required to provide a finished driveway to the property owner. Upon excavation, the driveway is to be re-opened for use as soon as possible. The contractor can use aggregate as a temporary driving surface if necessary, and this is incidental to the work.

C441.4 Traffic Control. Traffic shall be maintained at all hours of the workday. Ingress and egress shall be provided for all driveways. Barricades, signs and warning lights shall be in accordance with the Ohio Manual of Uniform Traffic Control Devices. The Contractor shall be responsible for all traffic control, except as noted in previous section. On heavily traveled roads, work hours may be limited between the hours of 8:30 A.M and 3:30 P.M.

C441.5 Method of Measurement. The quantity of asphalt to be paid for will be based on the actual number of cubic yards, complete and in place, as determined by actual square feet of asphalt rebuilt.

C441.6 Basis of Payment. The price bid for this item shall include all labor, equipment and material incidental to the construction of the asphalt concrete pavement according to these specifications, including temporary driving surface for driveway and roadway access.

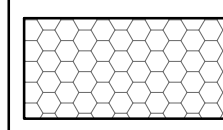
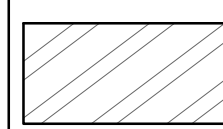


Payment will be made at the unit price bid:

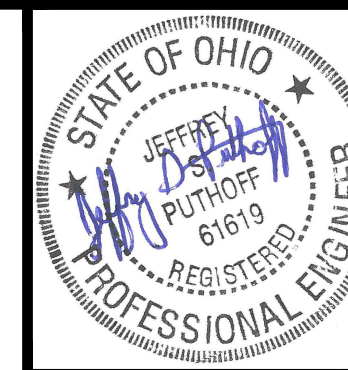
Item	Unit	Description
C441	Cubic Yard	Type 1, Asphalt Concrete Surface Course, PG64-22, Medium Traffic, 2 Inches Thick, Placed in 2 Lifts

C441	Square Foot	(446 or 448 acceptance) Type 1, Asphalt Concrete Surface Course, PG64-22, Medium Traffic, Driveway 4" Thick, Placed in 2 Lifts (448 acceptance)
------	-------------	--

NOTE:
WHEN TYING INTO EXISTING STORM THE CONTRACTOR SHALL VERIFY THAT THE NEW STORM MATCHES LINE AND GRADE, IF NOT THEN MODIFICATIONS WILL NEED TO BE MADE WITH THE NEW STORM TO LINE UP. ALL CONNECTIONS TO EXISTING STORM SHALL BE MADE WITH A CONCRETE COLLAR, INCLUDED IN THE COST OF ITEM 611.

HATCH SYMBOLS FOR PLANS

-  ITEM 608 - CURB RAMP WITH TRUNCATED DOMES, AS PER PLAN
-  ITEM 452 - 10" NON-REINFORCED CONCRETE PAVEMENT (DRIVE APRON)
-  ITEM 608 - 4" CONCRETE SIDEWALK, AS PER PLAN
-  ITEM SPEC, GRASS ROAD PAVER DRIVE

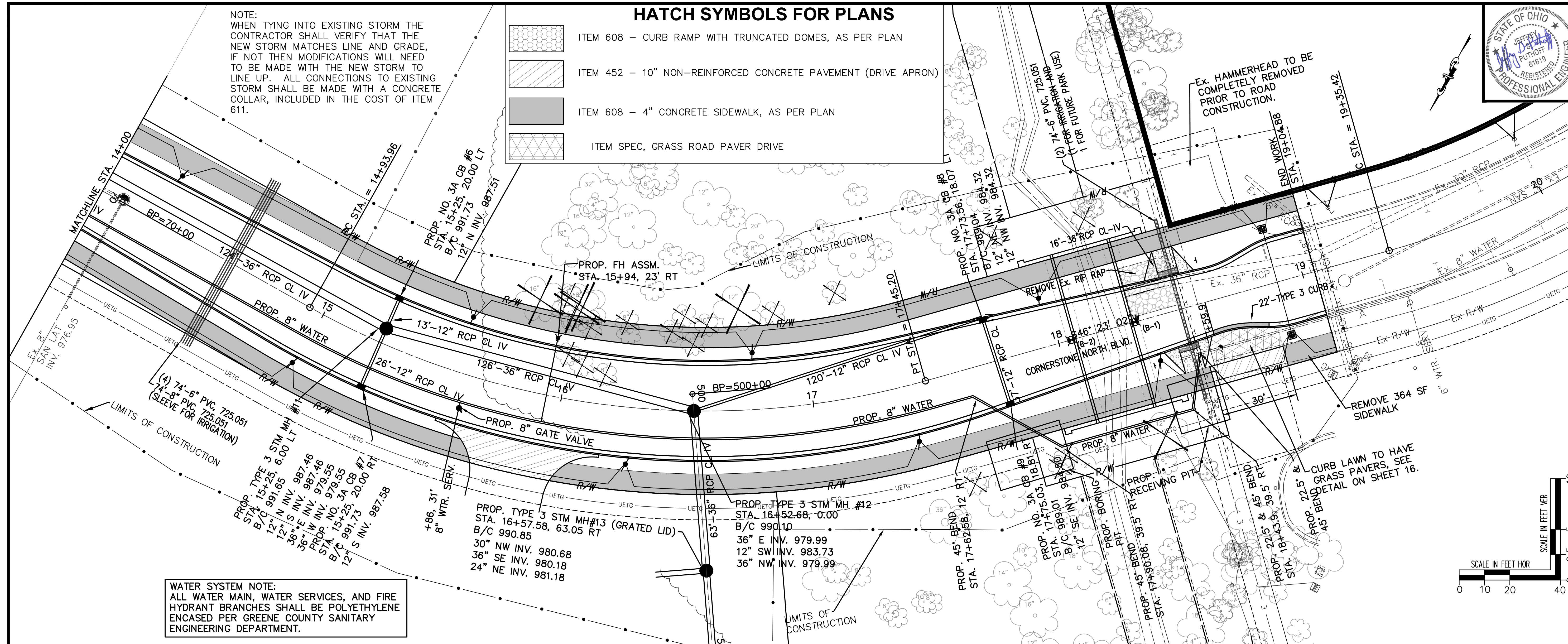


Choice One
Engineering
SIDNEY, OHIO 937.497.0200
LOVELAND, OHIO 513.239.8554
WWW.CHOICEONEENGINEERING.COM

CORNERSTONE NORTH OF CENTERVILLE, PH. 4
CITY OF CENTERVILLE
CORNERSTONE BLVD. PIP STA. 14+00 TO STA. 20+00

REVISIONS:
01-27-20 OEPA
5' COVER AT STREAM

FILE NAME
CORNERSTONE (4)
DRAWN BY
BHB
CHECKED BY
JSP
PROJECT No.
GREGEN1523
DATE
12-31-2019
SHEET NUMBER
31 OF 61



WATER SYSTEM NOTE:
ALL WATER MAIN, WATER SERVICES, AND FIRE HYDRANT BRANCHES SHALL BE POLYETHYLENE ENCASED PER GREENE COUNTY SANITARY ENGINEERING DEPARTMENT.

1000	992.43	992.27	992.10	991.94	991.77	991.58	991.24	990.87	990.51	990.14	989.77	989.46	989.28	989.15	989.03	988.90	988.78	988.65	988.53	988.40	988.28	988.15	988.03	987.90	987.78	987.65	987.53	987.40	987.28	987.15	987.03	986.90	986.78	986.65	986.53	986.40	986.28	986.15	986.03	985.90	985.78	985.65	985.53	985.40	985.28	985.15	985.03	984.90	984.78	984.65	984.53	984.40	984.28	984.15	984.03	983.90	983.78	983.65	983.53	983.40	983.28	983.15	983.03	982.90	982.78	982.65	982.53	982.40	982.28	982.15	982.03	981.90	981.78	981.65	981.53	981.40	981.28	981.15	981.03	980.90	980.78	980.65	980.53	980.40	980.28	980.15	980.03	979.90	979.78	979.65	979.53	979.40	979.28	979.15	979.03	978.90	978.78	978.65	978.53	978.40	978.28	978.15	978.03	977.90	977.78	977.65	977.53	977.40	977.28	977.15	977.03	976.90	976.78	976.65	976.53	976.40	976.28	976.15	976.03	975.90	975.78	975.65	975.53	975.40	975.28	975.15	975.03	974.90	974.78	974.65	974.53	974.40	974.28	974.15	974.03	973.90	973.78	973.65	973.53	973.40	973.28	973.15	973.03	972.90	972.78	972.65	972.53	972.40	972.28	972.15	972.03	971.90	971.78	971.65	971.53	971.40	971.28	971.15	971.03	970.90	970.78	970.65	970.53	970.40	970.28	970.15	970.03	969.90	969.78	969.65	969.53	969.40	969.28	969.15	969.03	968.90	968.78	968.65	968.53	968.40	968.28	968.15	968.03	967.90	967.78	967.65	967.53	967.40	967.28	967.15	967.03	966.90	966.78	966.65	966.53	966.40	966.28	966.15	966.03	965.90	965.78	965.65	965.53	965.40	965.28	965.15	965.03	964.90	964.78	964.65	964.53	964.40	964.28	964.15	964.03	963.90	963.78	963.65	963.53	963.40	963.28	963.15	963.03	962.90	962.78	962.65	962.53	962.40	962.28	962.15	962.03	961.90	961.78	961.65	961.53	961.40	961.28	961.15	961.03	960.90	960.78	960.65	960.53	960.40	960.28	960.15	960.03	959.90	959.78	959.65	959.53	959.40	959.28	959.15	959.03	958.90	958.78	958.65	958.53	958.40	958.28	958.15	958.03	957.90	957.78	957.65	957.53	957.40	957.28	957.15	957.03	956.90	956.78	956.65	956.53	956.40	956.28	956.15	956.03	955.90	955.78	955.65	955.53	955.40	955.28	955.15	955.03	954.90	954.78	954.65	954.53	954.40	954.28	954.15	954.03	953.90	953.78	953.65	953.53	953.40	953.28	953.15	953.03	952.90	952.78	952.65	952.53	952.40	952.28	952.15	952.03	951.90	951.78	951.65	951.53	951.40	951.28	951.15	951.03	950.90	950.78	950.65	950.53	950.40	950.28	950.15	950.03	949.90	949.78	949.65	949.53	949.40	949.28	949.15	949.03	948.90	948.78	948.65	948.53	948.40	948.28	948.15	948.03	947.90	947.78	947.65	947.53	947.40	947.28	947.15	947.03	946.90	946.78	946.65	946.53	946.40	946.28	946.15	946.03	945.90	945.78	945.65	945.53	945.40	945.28	945.15	945.03	944.90	944.78	944.65	944.53	944.40	944.28	944.15	944.03	943.90	943.78	943.65	943.53	943.40	943.28	943.15	943.03	942.90	942.78	942.65	942.53	942.40	942.28	942.15	942.03	941.90	941.78	941.65	941.53	941.40	941.28	941.15	941.03	940.90	940.78	940.65	940.53	940.40	940.28	940.15	940.03	939.90	939.78	939.65	939.53	939.40	939.28	939.15	939.03	938.90	938.78	938.65	938.53	938.40	938.28	938.15	938.03	937.90	937.78	937.65	937.53	937.40	937.28	937.15	937.03	936.90	936.78	936.65	936.53	936.40	936.28	936.15	936.03	935.90	935.78	935.65	935.53	935.40	935.28	935.15	935.03	934.90	934.78	934.65	934.53	934.40	934.28	934.15	934.03	933.90	933.78	933.65	933.53	933.40	933.28	933.15	933.03	932.90	932.78	932.65	932.53	932.40	932.28	932.15	932.03	931.90	931.78	931.65	931.53	931.40	931.28	931.15	931.03	930.90	930.78	930.65	930.53	930.40	930.28	930.15	930.03	929.90	929.78	929.65	929.53	929.40	929.28	929.15	929.03	928.90	928.78	928.65	928.53	928.40	928.28	928.15	928.03	927.90	927.78	927.65	927.53	927.40	927.28	927.15	927.03	926.90	926.78	926.65	926.53	926.40	926.28	926.15	926.03	925.90	925.78	925.65	925.53	925.40	925.28	925.15	925.03	924.90	924.78	924.65	924.53	924.40	924.28	924.15	924.03	923.90	923.78	923.65	923.53	923.40	923.28	923.15	923.03	922.90	922.78	922.65	922.53	922.40	922.28	922.15	922.03	921.90	921.78	921.65	921.53	921.40	921.28	921.15	921.03	920.90	920.78	920.65	920.53	920.40	920.28	920.15	920.03	919.90	919.78	919.65	919.53	919.40	919.28	919.15	919.03	918.90	918.78	918.65	918.53	918.40	918.28	918.15	918.03	917.90	917.78	917.65	917.53	917.40	917.28	917.15	917.03	916.90	916.78	916.65	916.53	916.40	916.28	916.15	916.03	915.90	915.78	915.65	915.53	915.40	915.28	915.15	915.03	914.90	914.78	914.65	914.53	914.40	914.28	914.15	914.03	913.90	913.78	913.65	913.53	913.40	913.28	913.15	913.03	912.90	912.78	912.65	912.53	912.40	912.28	912.15	912.03	911.90	911.78	911.65	911.53	911.40	911.28	911.15	911.03	910.90	910.78	910.65	910.53	910.40	910.28	910.15	910.03	909.90	909.78	909.65	909.53	909.40	909.28	909.15	909.03	908.90	908.78	908.65	908.53	908.40	908.28	908.15	908.03	907.90	907.78	907.65	907.53	907.40	907.28	907.15	907.03	906.90	906.78	906.65	906.53	906.40	906.28	906.15	906.03	905.90	905.78	905.65	905.53	905.40	905.28	905.15	905.03	904.90	904.78	904.65	904.53	904.40	904.28	904.15	904.03	903.90	903.78	903.65	903.53	903.40	903.28	903.15	903.03	902.90	902.78	902.65	902.53	902.40	902.28	902.15	902.03	901.90	901.78	901.65	901.53	901.40	901.28	901.15	901.03	900.90	900.78	900.65	900.53	900.40	900.28	900.15	900.03	899.90	899.78	899.65	899.53	899.40	899.28	899.15	899.03	898.90	898.78	898.65	898.53	898.40	898.28	898.15	898.03	897.90	897.78	897.65	897.53	897.40	897.28	897.15	897.03	896.90	896.78	896.65	896.53	896.40	896.28	896.15	896.03	895.90	895.78	895.65	895.53	895.40	895.28	895.15	895.03	894.90	894.78	894.65	894.53	894.40	894.28	894.15	894.03	893.90	893.78	893.65	893.53	893.40	893.28	893.15	893.03	892.90	892.78	892.65	892.53	892.40	892.28	892.15	892.03	891.90	891.78	891.65	891.53	891.40	891.28	891.15	891.03	890.90	890.78	890.65	890.53	890.40	890.28	890.15	890.03	889.90	889.78	889.65	889.53	889.40	889.28	889.15	889.03	888.90	888.78	888.65	888.53	888.40	888.28	888.15	888.03	887.90	887.78	887.65	887.53	887.40	887.28	887.15	887.03	886.90	886.78	886.65	886.53	886.40	886.28	886.15	886.03	885.90	885.78	885.65	885.53	885.40	885.28	885.15	885.03	884.90	884.78	884.65	884.53	884.40	884.28	884.15	884.03	883.90	883.78	883.65	883.53	883.40	883.28	883.15	883.03	882.90	882.78	882.65	882.53	882.40	882.28	882.15	882.03	881.90	881.78	881.65	881.53	881.40	881.28	881.15	881.03	880.90	880.78	880.65	880.53	880.40	880.28	880.15	880.03	879.90	879.78	879.65	879.53	879.40	879.28	879.15	879.03	878.90	878.78	878.65	878.53	878.40	878.28	878.15	878.03	877.90	877.78	877.65	877.53	877.40	877.28	877.15	877.03	876.90	876.78	876.65	876.53	876.40	876.28	876.15	876.03	875.90	875.78	875.65	875.53	875.40	875.28	875.15	875.03	874.90	874.78	874.65	874.53	874.40	874.28	874.15	874.03	873.90
------	--------	--------	--------	--------	--------	--------	--------	--------	--------	--------	--------	--------	--------	--------	--------	--------	--------	--------	--------	--------	--------	--------	--------	--------	--------	--------	--------	--------	--------	--------	--------	--------	--------	--------	--------	--------	--------	--------	--------	--------	--------	--------	--------	--------	--------	--------	--------	--------	--------	--------	--------	--------	--------	--------	--------	--------	--------	--------	--------	--------	--------	--------	--------	--------	--------	--------	--------	--------	--------	--------	--------	--------	--------	--------	--------	--------	--------	--------	--------	--------	--------	--------	--------	--------	--------	--------	--------	--------	--------	--------	--------	--------	--------	--------	--------	--------	--------	--------	--------	--------	--------	--------	--------	--------	--------	--------	--------	--------	--------	--------	--------	--------	--------	--------	--------	--------	--------	--------	--------	--------	--------	--------	--------	--------	--------	--------	--------	--------	--------	--------	--------	--------	--------	--------	--------	--------	--------	--------	--------	--------	--------	--------	--------	--------	--------	--------	--------	--------	--------	--------	--------	--------	--------	--------	--------	--------	--------	--------	--------	--------	--------	--------	--------	--------	--------	--------	--------	--------	--------	--------	--------	--------	--------	--------	--------	--------	--------	--------	--------	--------	--------	--------	--------	--------	--------	--------	--------	--------	--------	--------	--------	--------	--------	--------	--------	--------	--------	--------	--------	--------	--------	--------	--------	--------	--------	--------	--------	--------	--------	--------	--------	--------	--------	--------	--------	--------	--------	--------	--------	--------	--------	--------	--------	--------	--------	--------	--------	--------	--------	--------	--------	--------	--------	--------	--------	--------	--------	--------	--------	--------	--------	--------	--------	--------	--------	--------	--------	--------	--------	--------	--------	--------	--------	--------	--------	--------	--------	--------	--------	--------	--------	--------	--------	--------	--------	--------	--------	--------	--------	--------	--------	--------	--------	--------	--------	--------	--------	--------	--------	--------	--------	--------	--------	--------	--------	--------	--------	--------	--------	--------	--------	--------	--------	--------	--------	--------	--------	--------	--------	--------	--------	--------	--------	--------	--------	--------	--------	--------	--------	--------	--------	--------	--------	--------	--------	--------	--------	--------	--------	--------	--------	--------	--------	--------	--------	--------	--------	--------	--------	--------	--------	--------	--------	--------	--------	--------	--------	--------	--------	--------	--------	--------	--------	--------	--------	--------	--------	--------	--------	--------	--------	--------	--------	--------	--------	--------	--------	--------	--------	--------	--------	--------	--------	--------	--------	--------	--------	--------	--------	--------	--------	--------	--------	--------	--------	--------	--------	--------	--------	--------	--------	--------	--------	--------	--------	--------	--------	--------	--------	--------	--------	--------	--------	--------	--------	--------	--------	--------	--------	--------	--------	--------	--------	--------	--------	--------	--------	--------	--------	--------	--------	--------	--------	--------	--------	--------	--------	--------	--------	--------	--------	--------	--------	--------	--------	--------	--------	--------	--------	--------	--------	--------	--------	--------	--------	--------	--------	--------	--------	--------	--------	--------	--------	--------	--------	--------	--------	--------	--------	--------	--------	--------	--------	--------	--------	--------	--------	--------	--------	--------	--------	--------	--------	--------	--------	--------	--------	--------	--------	--------	--------	--------	--------	--------	--------	--------	--------	--------	--------	--------	--------	--------	--------	--------	--------	--------	--------	--------	--------	--------	--------	--------	--------	--------	--------	--------	--------	--------	--------	--------	--------	--------	--------	--------	--------	--------	--------	--------	--------	--------	--------	--------	--------	--------	--------	--------	--------	--------	--------	--------	--------	--------	--------	--------	--------	--------	--------	--------	--------	--------	--------	--------	--------	--------	--------	--------	--------	--------	--------	--------	--------	--------	--------	--------	--------	--------	--------	--------	--------	--------	--------	--------	--------	--------	--------	--------	--------	--------	--------	--------	--------	--------	--------	--------	--------	--------	--------	--------	--------	--------	--------	--------	--------	--------	--------	--------	--------	--------	--------	--------	--------	--------	--------	--------	--------	--------	--------	--------	--------	--------	--------	--------	--------	--------	--------	--------	--------	--------	--------	--------	--------	--------	--------	--------	--------	--------	--------	--------	--------	--------	--------	--------	--------	--------	--------	--------	--------	--------	--------	--------	--------	--------	--------	--------	--------	--------	--------	--------	--------	--------	--------	--------	--------	--------	--------	--------	--------	--------	--------	--------	--------	--------	--------	--------	--------	--------	--------	--------	--------	--------	--------	--------	--------	--------	--------	--------	--------	--------	--------	--------	--------	--------	--------	--------	--------	--------	--------	--------	--------	--------	--------	--------	--------	--------	--------	--------	--------	--------	--------	--------	--------	--------	--------	--------	--------	--------	--------	--------	--------	--------	--------	--------	--------	--------	--------	--------	--------	--------	--------	--------	--------	--------	--------	--------	--------	--------	--------	--------	--------	--------	--------	--------	--------	--------	--------	--------	--------	--------	--------	--------	--------	--------	--------	--------	--------	--------	--------	--------	--------	--------	--------	--------	--------	--------	--------	--------	--------	--------	--------	--------	--------	--------	--------	--------	--------	--------	--------	--------	--------	--------	--------	--------	--------	--------	--------	--------	--------	--------	--------	--------	--------	--------	--------	--------	--------	--------	--------	--------	--------	--------	--------	--------	--------	--------	--------	--------	--------	--------	--------	--------	--------	--------	--------	--------	--------	--------	--------	--------	--------	--------	--------	--------	--------	--------	--------	--------	--------	--------	--------	--------	--------	--------	--------	--------	--------	--------	--------	--------	--------	--------	--------	--------	--------	--------	--------	--------	--------	--------	--------	--------	--------	--------	--------	--------	--------	--------	--------	--------	--------	--------	--------	--------	--------	--------	--------	--------	--------	--------	--------	--------	--------	--------	--------	--------	--------	--------	--------	--------	--------	--------	--------	--------	--------	--------	--------	--------	--------	--------	--------	--------	--------	--------	--------	--------	--------	--------	--------	--------	--------	--------	--------	--------	--------	--------	--------	--------	--------	--------	--------	--------	--------	--------	--------	--------	--------	--------	--------	--------	--------	--------	--------	--------	--------	--------	--------	--------	--------	--------	--------	--------	--------	--------	--------	--------	--------	--------	--------	--------	--------	--------	--------	--------	--------	--------	--------	--------	--------	--------	--------	--------	--------	--------	--------	--------	--------	--------	--------	--------	--------	--------	--------	--------	--------	--------	--------	--------

UNIT PRICE SHEET

PROJECT: Cornerstone at Centerville, North On-Site Public Improvements, Phase 4 Roadway Improvements

PROJECT NUMBER: _____

THE CITY OF CENTERVILLE MATERIAL AND CONSTRUCTION SPECIFICATIONS ARE PART OF THIS PROPOSAL AND MAY BE REFERENCED FOR A MORE COMPLETE DESCRIPTION OF THE ITEMS LISTED. RETURN ONE (1) FILLED-IN COPY OF PROPERLY SIGNED PROPOSAL TOGETHER WITH THE EXECUTED FORMS.

Base Bid- Local Funding Project						
REF NUM	SPEC NUM	DESCRIPTION	EST QNTY	UNITS	UNIT PRICE	AMOUNT BID
ROADWAY						
1	201	CLEARING AND GRUBBING	1	LUMP		
2	202	WALK REMOVED	439	S.F.		
3	202	CURB AND GUTTER REMOVED	20	FT.		
4	202	PAVEMENT REMOVED	314	S.Y.		
5	202	REMOVED, AS PER PLAN	1	LUMP		
6	204	SUBGRADE COMPACTION	9,204	S.Y.		
7	204	EXCAVATION OF SUBGRADE AND STRUCTURAL EMBANKMENT, AS PER PLAN	1,550	C.Y.		
8	204	EXCAVATION	7,764	C.Y.		
9	204	EMBANKMENT	1,211	C.Y.		
10	608	4" CONCRETE WALK	20,573	S.F.		
11	608	CURB RAMPS	2,352	S.F.		
12	611	MANHOLE ADJUSTED TO GRADE	11	EACH		
13	SPEC	GRASS ROAD PAVER DRIVE	303	S.F.		
14	SPEC	GEOGRID, AS PER PLAN (TENSAR TriAx TX5 GEOGRID)	6,245	S.Y.		
EROSION CONTROL						
15	659	SEEDING AND MULCHING, AS PER PLAN	3,800	S.Y.		
16	659	SEEDING AND MULCHING, CLASS 3A	3,450	S.Y.		
17	671	EROSION CONTROL MAT, TYPE B	340	S.Y.		
18	832	EROSION CONTROL	15,000	EACH		
DRAINAGE						
19	605	6" SHALLOW PIPE UNDERDRAIN, (707.31) (PERFORATED), AS PER PLAN	3,095	FT.		
20	611	12" RCP CL IV, STORM SEWER, AS PER PLAN	338	FT.		
21	611	15" RCP CL IV, STORM SEWER, AS PER PLAN	10	FT.		
22	611	24" RCP CL IV, STORM SEWER, AS PER PLAN	100	FT.		
23	611	36" RCP CL IV, STORM SEWER, AS PER PLAN	459	FT.		
24	611	ODOT TYPE 3 CATCH BASIN	1	EACH		

REF NUM	SPEC NUM	DESCRIPTION	EST QNTY	UNITS	UNIT PRICE	AMOUNT BID
25	611	ODOT TYPE 3A CATCH BASIN	14	EACH		
26	611	TYPE 3 STORM SEWER MANHOLE, AS PER PLAN	5	EACH		
27	611	TYPE 2-3 CATCH BASIN	2	EACH		

PAVEMENT

28	254	PAVEMENT PLANNING, ASPHALT CONCRETE	32	S.Y.		
29	301	5-1/2" ASPHALT CONCRETE BASE, PG64-22	796	C.Y.		
30	304	AGGREGATE BASE, AS PER PLAN	1,631	C.Y.		
31	407	NON-TRACKING TACK COAT	521	GAL.		
32	411	STABILIZED CRUSHED AGGREGATE	281	C.Y.		
33	442	1-3/4" ASPHALT CONCRETE, SURFACE COURSE, 12.5 mm, TYPE A, (448) PG76-22M	255	C.Y.		
34	441	1-3/4" ASPHALT CONCRETE INTERMEDIATE COURSE, TYPE 2, (448)	253	C.Y.		
35	452	10" NON-REINFORCED CONCRETE PAVEMENT, AS PER PLAN	425	S.Y.		
36	609	COMBINATION CURB AND GUTTER, TYPE 2, AS PER PLAN	3,073	FT.		
37	609	COMBINATION CURB AND GUTTER, TYPE 3, AS PER PLAN (FIRE TRUCK CURB)	22	FT.		

SANITARY SEWER

38	611	6" SANITARY SEWER LATERAL	85	FT.		
----	-----	---------------------------	----	-----	--	--

WATER WORKS

39	638	6" WATER MAIN DUCTILE IRON ANCHORING PIPE AND FITTINGS	96	FT.		
40	638	8" WATER SERVICE BRANCHES, AS PER PLAN	203	FT.		
41	638	8" WATER MAIN, AS PER PLAN	1,609	FT.		
42	638	6" GATE VALVE	4	EACH		
43	638	8" GATE VALVE	11	EACH		
44	638	6" FIRE HYDRANT ASSEMBLY	4	EACH		
45	638	VALVE ADJUSTED TO GRADE	3	EACH		
46	SPEC	CASING PIPE	58	FT.		

TRAFFIC CONTROL

47	630	SIGN, FLAT SHEET	68	S.F.		
48	630	SIGN, DOUBLE FACED, STREET NAME, AS PER PLAN	2	EACH		
49	630	TRAFFIC SIGN SUPPORT SYSTEM, AS PER PLAN	12	EACH		
50	630	REMOVAL OF GROUND MOUNTED POST SUPPORT AND STORAGE	14	EACH		
51	630	REMOVAL OF GROUND MOUNTED SIGN AND REERECTION (REUSE EXISTING POST)	10	EACH		

REF NUM	SPEC NUM	DESCRIPTION	EST QNTY	UNITS	UNIT PRICE	AMOUNT BID
52	644	DOUBLE YELLOW CENTERLINE	0.40	MILE		
53	644	CROSSWALK LINE	389	FT.		
54	644	TRANSVERSE/DIAGONAL LINE	83	FT.		
55	644	WHITE CHANNELIZING LINE	104	FT.		
56	644	STOP LINE	48	FT.		
57	644	PARKING STRIPES	264	FT.		
58	644	NO PARKING (WORDS) AND TRANSVERSE AND BORDER LINES	2	EACH		
59	644	LANE ARROW	3	EACH		

LIGHTING

60	625	8" PVC, 725.051 (IRRIGATION SLEEVE)	238	FT		
61	625	6" PVC, 725.051 (UTILITY SLEEVE)	1,012	FT.		
62	625	COBRA HEAD LIGHT ON EXISTING POLE	1	EACH		
63	625	LIGHT POLE A, AS PER PLAN	6	EACH		
64	625	LIGHT POLE B, AS PER PLAN	21	EACH		
65	625	LIGHT POLE BASE FOUNDATION	27	EACH		
66	625	CONNECTION, FUSED PULL APART	27	EACH		
67	625	PULL BOX, 24" x 24" x 48" QUAZITE, AS PER PLAN	6	EACH		
68	625	2" PVC CONDUIT (INCLUDES TRENCHING AND BACKFILL)	3,189	FT.		
69	625	3" PVC CONDUIT (INCLUDES TRENCHING AND BACKFILL)	257	FT.		
70	625	3" PVC CONDUIT, JACKED OR DRILLED	720	FT.		
71	625	NO. 2 AWG 600 VOLT DISTRIBUTION CABLE	17,538	FT.		
72	625	NO. 10 AWG POL AND BRACET CABLE	1,998	FT.		

INCIDENTIAL

73	614	MAINTAINING TRAFFIC	1	LUMP		
74	623	CONSTRUCTION LAYOUT STAKES AND SURVEYING, AS PER PLAN	1	LUMP		
75	624	MOBILIZATION	1	LUMP		
76	SPEC	ROCK EXCAVATION	200	C.Y.		

STRUCTURES

77	503	UNCLASSIFIED EXCAVATION	1	LUMP		
78	511	CLASS QC 1 CONCRETE, FOOTINGS	48	C.Y.		
79	512	TYPE 3 WATERPROOFING	336	S.Y.		

REF NUM	SPEC NUM	DESCRIPTION	EST QNTY	UNITS	UNIT PRICE	AMOUNT BID
80	601	ROCK CHANNEL PROTECTION, TYPE B	26	C.Y.		
81	611	24' x 6' CONDUIT, TYPE A, PRE-CAST THREE SIDED STRUCTURES, WINGWALLS AND HEADWALLS, AS PER PLAN	1	LUMP		
82	SPEC	FAUX STONE VENEER (ROADWAY SIDE OF WAY AND CORNER PILASTERS)	530	S.F.		
83	SPEC	30"X30"X4" LIME STONE CAP	4	EACH		
84	SPEC	CAST STONE ENGRAVED SCRIPT "C"	4	EACH		
84.1	SPEC	4" LIMESTONE CAP	106	S.F.		

LANDSCAPING						
85	661	EUROPEAN HORNBEAM, 2.5" CALIPER	17	EACH		
86	661	MORAIN HONEYLOCUST, 3.5" CALIPER	14	EACH		
87	661	SKYLINE HONEYLOCUST, 3.5" CALIPER	12	EACH		
88	661	CORINTHIAN LINDEN, 3" CALIPER	6	EACH		
89	661	GREEN VASE ZELKOVA, 3" CALIPER	7	EACH		
90	661	PRINCETON ELM, 3.5" CALIPER	4	EACH		

IRRIGATION						
91	SPEC	IRRIGATION SYSTEM	1	LUMP		
GRAND TOTAL						

Note: The items and quantities are projected, and may be modified or removed at the City's discretion without adjustment. Therefore, avoid weighting items because actual quantities could change from the engineer's estimated quantities.