

RESOLUTION NO. 27-98
CITY OF CENTERVILLE, OHIO

SPONSORED BY COUNCILMEMBER C. MARK KINGSEED ON THE
17th DAY OF AUGUST, 1998.

A RESOLUTION AUTHORIZING THE CITY MANAGER
TO GRANT AN EASEMENT, ON BEHALF OF THE CITY
OF CENTERVILLE, TO THE BOARD OF COUNTY
COMMISSIONERS OF MONTGOMERY COUNTY, OHIO,
FOR THE INSTALLATION OF SANITARY SEWER AND
WATER LINES IN YANKEE TRACE, SECTION 16.

WHEREAS, it is necessary for the City of Centerville to grant unto the Board of
County Commissioners of Montgomery County, Ohio, an easement for the installation of
sanitary sewer and water lines; and


WHEREAS, to accomplish this the Board of County Commissioners of
Montgomery County, Ohio, is requesting an easement across three different areas located
in Section 16 of the Yankee Trace Residential Development.

NOW THEREFORE, THE MUNICIPALITY OF CENTERVILLE HEREBY
RESOLVES:

Section 1. That the City Manager is hereby authorized and directed to grant an
easement to the Board of County Commissioners of Montgomery County, Ohio, in order
to install sanitary sewer and water lines across Section 16, Yankee Trace Residential
Development, in accordance with said addendum attached hereto and made a part hereof,
marked Exhibit "A".

Section 2. This Resolution shall become effective at the earliest date allowed
by law.

PASSED this 17th day of AUGUST, 1998.



Mayor of the City of Centerville, Ohio

ATTEST:

Maile McLaughlin
Clerk of Council, City of Centerville, Ohio

CERTIFICATE

The undersigned, Clerk of the Council of the City of Centerville, Ohio, hereby certifies that the foregoing is a true and correct copy of Resolution Number 27-98, passed by the Council of the City of Centerville, Ohio, on the 17th day of AUGUST, 1998.

Maile McLaughlin
Clerk of Council

Approved as to form, consistency
with the Charter and Constitutional Provisions.

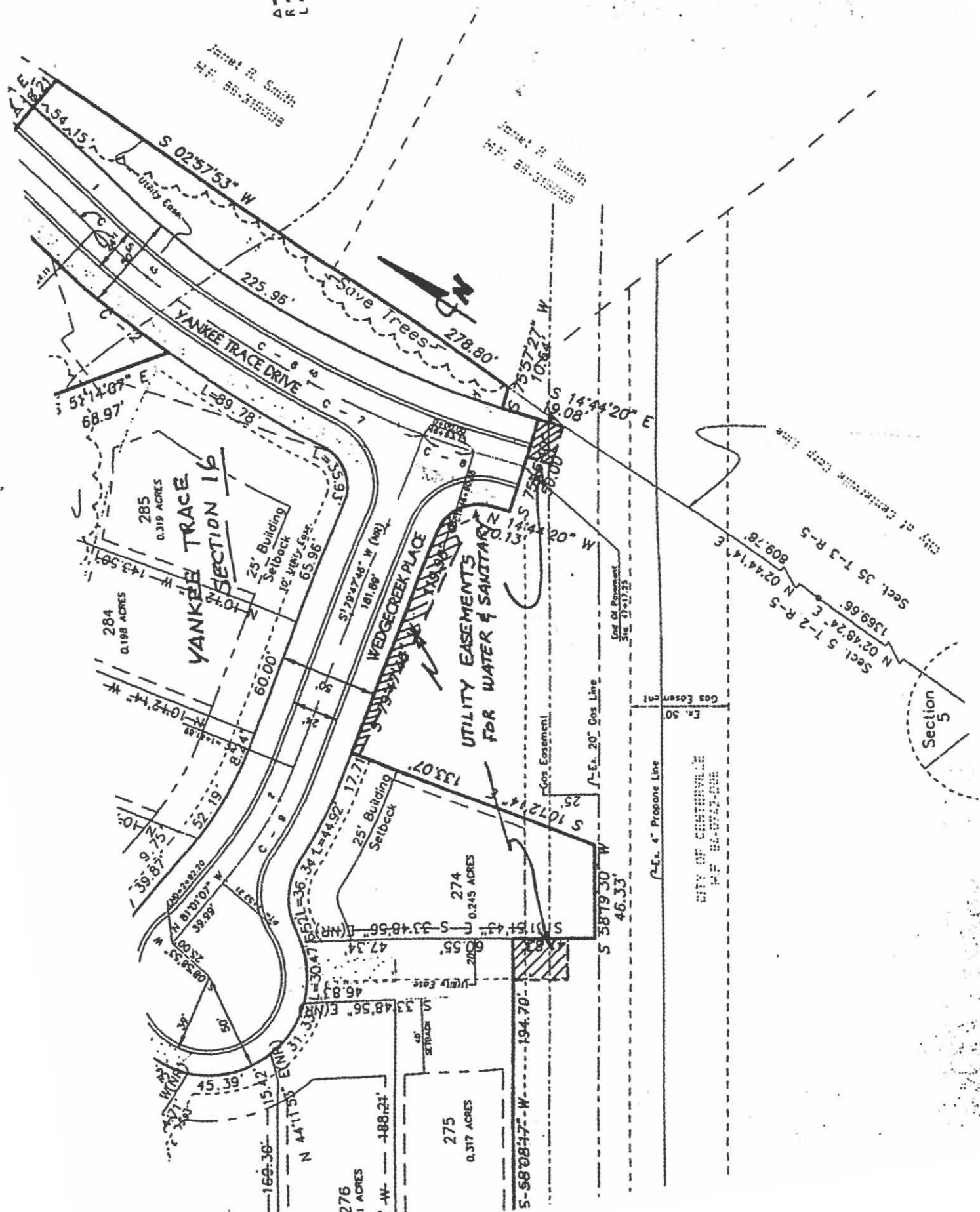
Department of Law
Robert N. Farquhar
Municipal Attorney

938

A = 26735'40"
R = 39.00'
L = 182.15'

Janet R. Smith
M.F. 88-318038

Janet R. Smith
M.F. 88-318038



SECTION 16
285
0.319 ACRES

284
0.198 ACRES

274
0.245 ACRES

275
0.317 ACRES

276
0.317 ACRES

CITY OF CENTERVILLE
M.F. 88-0742-006

Section 5
Sect. 5 T-2 R-5 N 02°44'14\"/>

Section 5