

RESOLUTION NO. 35-95  
CITY OF CENTERVILLE, OHIO

SPONSORED BY COUNCILMEMBER J.V. Stone ON THE 15th DAY  
OF May, 1995.

A RESOLUTION ACCEPTING THE DEDICATION OF A 0.0076 ACRE  
TRACT OF LAND FROM CENTERVILLE ASSOCIATES III LIMITED  
PARTNERSHIP FOR THE WIDENING OF STATE ROUTE 48 IN THE  
CITY OF CENTERVILLE, OHIO.

WHEREAS, the City of Centerville, Ohio is presently engaged in a road widening  
project on State Route 48 in said City extending south from Spring Valley Road; and

WHEREAS, said widening necessitates the obtaining of additional public right-of-way  
part of which passes over lands owned by Centerville Associates III Limited Partnership; and

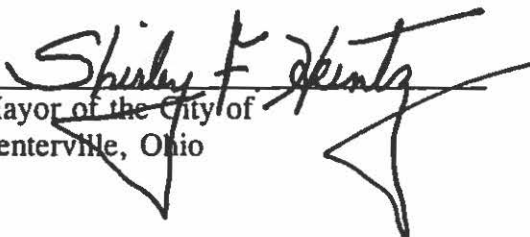
WHEREAS, Centerville Associates III Limited Partnership has offered to convey the  
necessary right-of-way to the City of Centerville by way of a gift;

NOW THEREFORE,

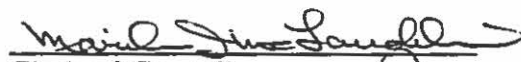
THE MUNICIPALITY OF CENTERVILLE HEREBY RESOLVES:

Section 1. That the offer of Centerville Associates III Limited Partnership to  
dedicate 0.0076 acres of land to the City of Centerville as a gift free of any charge is hereby  
accepted.

PASSED THIS 15th day of May, 1995.

  
Mayor of the City of  
Centerville, Ohio

ATTEST:

  
Clerk of Council  
City of Centerville, Ohio

CERTIFICATE

The undersigned Clerk of Council of the City of Centerville, Ohio, hereby certifies the foregoing to be a true and correct copy of Resolution No. 35-95, passed by the Council of the City of Centerville, Ohio on the 15th day of May, 1995.

  
Clerk of Council

Approved as to form, consistency  
with existing ordinances, the  
charter & constitutional provisions  
Department of Law  
Robert N. Farquhar  
Municipal Attorney

"ATTACHMENT A"

S.R. 48 - PHASE II  
PARCEL NO. 1

CENTERVILLE ASSOCIATES III LIMITED PARTNERSHIP

SITUATE IN THE NORTHWEST QUARTER OF SECTION 29, TOWN 3, RANGE 5 M.R.S., CITY OF CENTERVILLE, TOWNSHIP OF WASHINGTON, COUNTY OF MONTGOMERY, STATE OF OHIO AND BEING PART OF AN 18.125 ACRE TRACT CONVEYED TO CENTERVILLE PROPERTIES BY DEED RECORDED MF 90-449-A06 OF THE DEED RECORDS OF MONTGOMERY COUNTY WITH BEARINGS BASED ON SAID DEED AND BEING MORE PARTICULARLY DESCRIBED AS FOLLOWS:

BEGINNING AT THE INTERSECTION OF THE EXISTING CENTERLINE OF SPRING VALLEY ROAD WITH THE EXISTING CENTERLINE OF S.R. 48;

THENCE WITH SAID CENTERLINE OF S.R. 48 SOUTH 0°20'30" EAST 2,082.96 FEET TO GRANTOR'S NORTHEAST PROPERTY CORNER;

THENCE CONTINUING WITH SAID CENTERLINE AND GRANTOR'S EAST PROPERTY LINE SOUTH 0°20'30" EAST 348.32 FEET TO A POINT;

THENCE SOUTH 89°39'30" WEST 50.95 FEET TO A POINT ON THE PROPOSED WEST RIGHT-OF-WAY LINE OF S.R. 48 AND THE TRUE POINT OF BEGINNING FOR THE PARCEL HEREIN DESCRIBED;

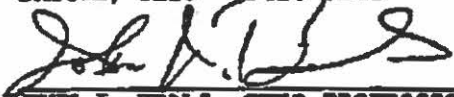
THENCE WITH THE WEST RIGHT-OF-WAY OF S.R. 48 SOUTH 1°46'40" EAST 30.00 FEET TO A POINT;

THENCE SOUTH 88°13'20" WEST 11.00 FEET TO A POINT;

THENCE NORTH 1°46'40" WEST 30.00 FEET TO A POINT;

THENCE NORTH 88°13'20" EAST 11.00 FEET TO THE TRUE POINT OF BEGINNING, CONTAINING 0.0076 ACRES OF LAND, MORE OR LESS, SUBJECT TO ALL LEGAL HIGHWAYS AND EASEMENTS OF RECORD

PREPARED BY: LOCKWOOD, JONES & BEALS, INC.  
3100 RESEARCH BOULEVARD  
DAYTON, OHIO 45424-0246

BY:   
JOHN J. BEALS, OHIO PROFESSIONAL  
SURVEYOR NO. 5312


DATE: Oct 27, 1994

**CERTIFICATION FOR LEGAL DESCRIPTIONS**

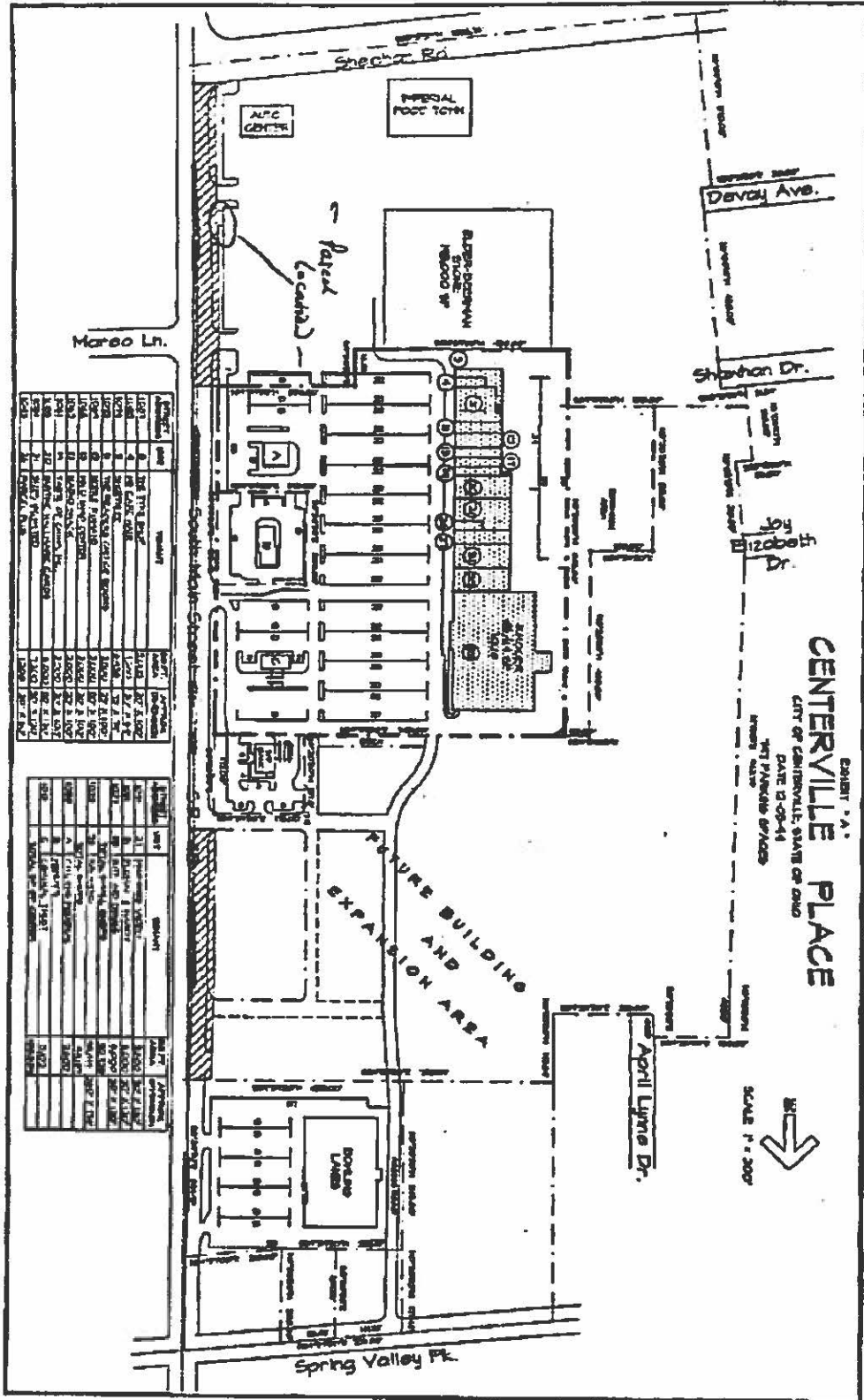
The undersigned hereby certifies to Centerville Associates III Limited Partnership, Manufacturers Life Insurance Company, U.S.A. and Chicago Title Insurance Company that the legal descriptions hereafter set forth were prepared by the undersigned, a professional registered land surveyor of Lockwood, Jones & Beals, Inc. and that the following descriptions accurately describe the parcels of land to be conveyed by Centerville Associates III Limited Partnership to the City of Centerville, Ohio.

DESCRIPTION - SEE ATTACHMENT A

LOCKWOOD, JONES & BEALS, INC.

By:   
John J. Beals,  
Ohio Professional Surveyor  
No. 5312

Date: April 14, 1995



Lot No.	Area	Area (sq. ft.)	Area (sq. ft.)	Area (sq. ft.)
1001	1001	1001	1001	1001
1002	1002	1002	1002	1002
1003	1003	1003	1003	1003
1004	1004	1004	1004	1004
1005	1005	1005	1005	1005
1006	1006	1006	1006	1006
1007	1007	1007	1007	1007
1008	1008	1008	1008	1008
1009	1009	1009	1009	1009
1010	1010	1010	1010	1010
1011	1011	1011	1011	1011
1012	1012	1012	1012	1012
1013	1013	1013	1013	1013
1014	1014	1014	1014	1014
1015	1015	1015	1015	1015
1016	1016	1016	1016	1016
1017	1017	1017	1017	1017
1018	1018	1018	1018	1018
1019	1019	1019	1019	1019
1020	1020	1020	1020	1020
1021	1021	1021	1021	1021
1022	1022	1022	1022	1022
1023	1023	1023	1023	1023
1024	1024	1024	1024	1024
1025	1025	1025	1025	1025
1026	1026	1026	1026	1026
1027	1027	1027	1027	1027
1028	1028	1028	1028	1028
1029	1029	1029	1029	1029
1030	1030	1030	1030	1030
1031	1031	1031	1031	1031
1032	1032	1032	1032	1032
1033	1033	1033	1033	1033
1034	1034	1034	1034	1034
1035	1035	1035	1035	1035
1036	1036	1036	1036	1036
1037	1037	1037	1037	1037
1038	1038	1038	1038	1038
1039	1039	1039	1039	1039
1040	1040	1040	1040	1040
1041	1041	1041	1041	1041
1042	1042	1042	1042	1042
1043	1043	1043	1043	1043
1044	1044	1044	1044	1044
1045	1045	1045	1045	1045
1046	1046	1046	1046	1046
1047	1047	1047	1047	1047
1048	1048	1048	1048	1048
1049	1049	1049	1049	1049
1050	1050	1050	1050	1050
1051	1051	1051	1051	1051
1052	1052	1052	1052	1052
1053	1053	1053	1053	1053
1054	1054	1054	1054	1054
1055	1055	1055	1055	1055
1056	1056	1056	1056	1056
1057	1057	1057	1057	1057
1058	1058	1058	1058	1058
1059	1059	1059	1059	1059
1060	1060	1060	1060	1060
1061	1061	1061	1061	1061
1062	1062	1062	1062	1062
1063	1063	1063	1063	1063
1064	1064	1064	1064	1064
1065	1065	1065	1065	1065
1066	1066	1066	1066	1066
1067	1067	1067	1067	1067
1068	1068	1068	1068	1068
1069	1069	1069	1069	1069
1070	1070	1070	1070	1070
1071	1071	1071	1071	1071
1072	1072	1072	1072	1072
1073	1073	1073	1073	1073
1074	1074	1074	1074	1074
1075	1075	1075	1075	1075
1076	1076	1076	1076	1076
1077	1077	1077	1077	1077
1078	1078	1078	1078	1078
1079	1079	1079	1079	1079
1080	1080	1080	1080	1080
1081	1081	1081	1081	1081
1082	1082	1082	1082	1082
1083	1083	1083	1083	1083
1084	1084	1084	1084	1084
1085	1085	1085	1085	1085
1086	1086	1086	1086	1086
1087	1087	1087	1087	1087
1088	1088	1088	1088	1088
1089	1089	1089	1089	1089
1090	1090	1090	1090	1090
1091	1091	1091	1091	1091
1092	1092	1092	1092	1092
1093	1093	1093	1093	1093
1094	1094	1094	1094	1094
1095	1095	1095	1095	1095
1096	1096	1096	1096	1096
1097	1097	1097	1097	1097
1098	1098	1098	1098	1098
1099	1099	1099	1099	1099
1100	1100	1100	1100	1100

Lot No.	Area	Area (sq. ft.)	Area (sq. ft.)	Area (sq. ft.)
1001	1001	1001	1001	1001
1002	1002	1002	1002	1002
1003	1003	1003	1003	1003
1004	1004	1004	1004	1004
1005	1005	1005	1005	1005
1006	1006	1006	1006	1006
1007	1007	1007	1007	1007
1008	1008	1008	1008	1008
1009	1009	1009	1009	1009
1010	1010	1010	1010	1010
1011	1011	1011	1011	1011
1012	1012	1012	1012	1012
1013	1013	1013	1013	1013
1014	1014	1014	1014	1014
1015	1015	1015	1015	1015
1016	1016	1016	1016	1016
1017	1017	1017	1017	1017
1018	1018	1018	1018	1018
1019	1019	1019	1019	1019
1020	1020	1020	1020	1020
1021	1021	1021	1021	1021
1022	1022	1022	1022	1022
1023	1023	1023	1023	1023
1024	1024	1024	1024	1024
1025	1025	1025	1025	1025
1026	1026	1026	1026	1026
1027	1027	1027	1027	1027
1028	1028	1028	1028	1028
1029	1029	1029	1029	1029
1030	1030	1030	1030	1030
1031	1031	1031	1031	1031
1032	1032	1032	1032	1032
1033	1033	1033	1033	1033
1034	1034	1034	1034	1034
1035	1035	1035	1035	1035
1036	1036	1036	1036	1036
1037	1037	1037	1037	1037
1038	1038	1038	1038	1038
1039	1039	1039	1039	1039
1040	1040	1040	1040	1040
1041	1041	1041	1041	1041
1042	1042	1042	1042	1042
1043	1043	1043	1043	1043
1044	1044	1044	1044	1044
1045	1045	1045	1045	1045
1046	1046	1046	1046	1046
1047	1047	1047	1047	1047
1048	1048	1048	1048	1048
1049	1049	1049	1049	1049
1050	1050	1050	1050	1050
1051	1051	1051	1051	1051
1052	1052	1052	1052	1052
1053	1053	1053	1053	1053
1054	1054	1054	1054	1054
1055	1055	1055	1055	1055
1056	1056	1056	1056	1056
1057	1057	1057	1057	1057
1058	1058	1058	1058	1058
1059	1059	1059	1059	1059
1060	1060	1060	1060	1060
1061	1061	1061	1061	1061
1062	1062	1062	1062	1062
1063	1063	1063	1063	1063
1064	1064	1064	1064	1064
1065	1065	1065	1065	1065
1066	1066	1066	1066	1066
1067	1067	1067	1067	1067
1068	1068	1068	1068	1068
1069	1069	1069	1069	1069
1070	1070	1070	1070	1070
1071	1071	1071	1071	1071
1072	1072	1072	1072	1072
1073	1073	1073	1073	1073
1074	1074	1074	1074	1074
1075	1075	1075	1075	1075
1076	1076	1076	1076	1076
1077	1077	1077	1077	1077
1078	1078	1078	1078	1078
1079	1079	1079	1079	1079
1080	1080	1080	1080	1080
1081	1081	1081	1081	1081
1082	1082	1082	1082	1082
1083	1083	1083	1083	1083
1084	1084	1084	1084	1084
1085	1085	1085	1085	1085
1086	1086	1086	1086	1086
1087	1087	1087	1087	1087
1088	1088	1088	1088	1088
1089	1089	1089	1089	1089
1090	1090	1090	1090	1090
1091	1091	1091	1091	1091
1092	1092	1092	1092	1092
1093	1093	1093	1093	1093
1094	1094	1094	1094	1094
1095	1095	1095	1095	1095
1096	1096	1096	1096	1096
1097	1097	1097	1097	1097
1098	1098	1098	1098	1098
1099	1099	1099	1099	1099
1100	1100	1100	1100	1100