



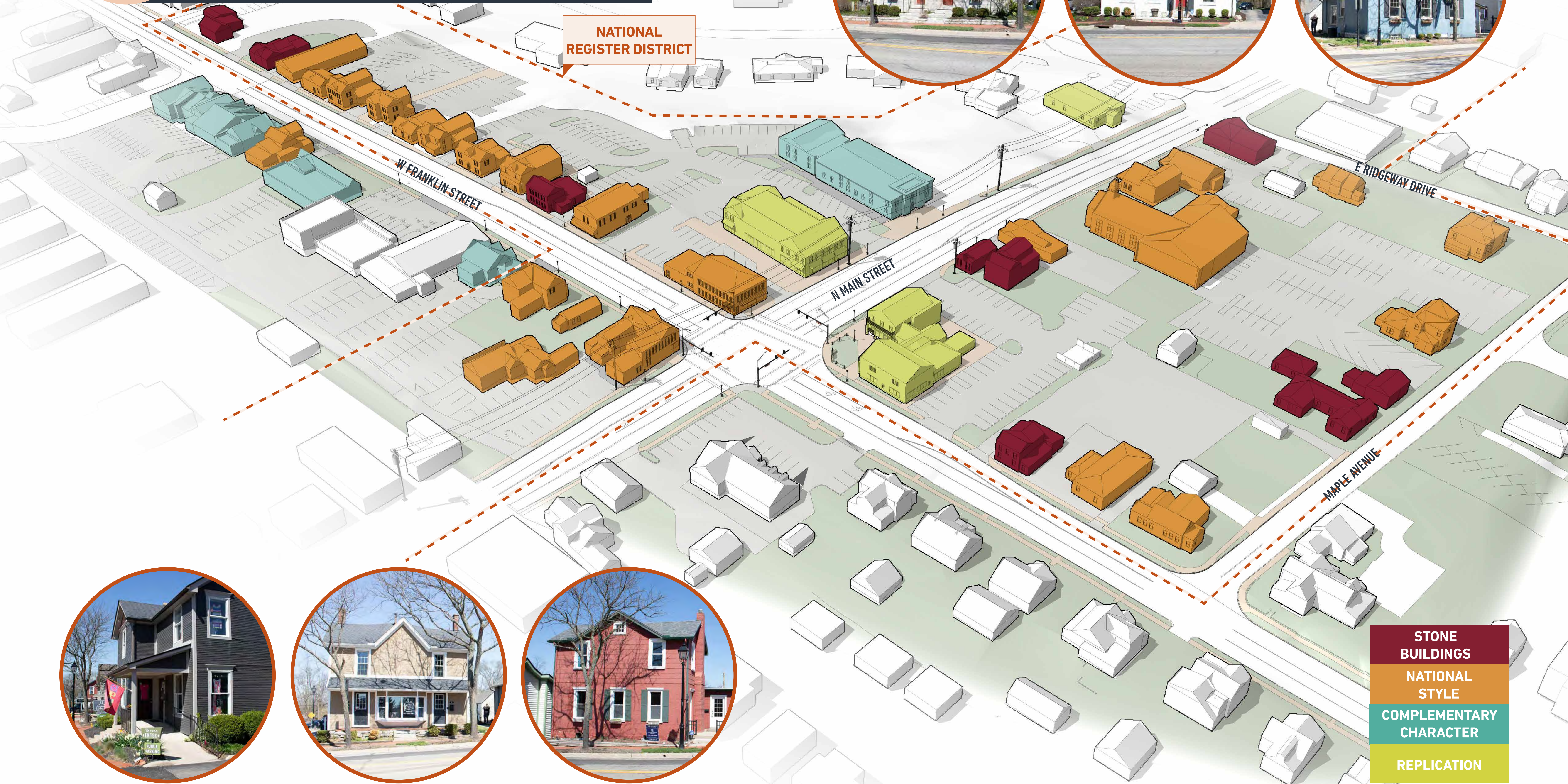
# DESIGN AND ARCHITECTURE



# ARCHITECTURE PRESERVATION DISTRICT CHARACTER

*DESIGN AND ARCHITECTURE* Create a visual language that complements existing character and represents quality and timeless materials

**NATIONAL REGISTER DISTRICT**



- STONE BUILDINGS
- NATIONAL STYLE
- COMPLEMENTARY CHARACTER
- REPLICATION



**MAIN STREET - NEW DEVELOPMENT AND COMMUNITY SPACE**

*DESIGN AND ARCHITECTURE Create a visual language that complements existing character and represents quality and timeless materials*



**RIDGEWAY DRIVE - CLARENCE NUTT HOUSE SIGNATURE RESTAURANT**

*DESIGN AND ARCHITECTURE Create a visual language that complements existing character and represents quality and timeless materials*



## VIA TO WEST FRANKLIN STREET

*DESIGN AND ARCHITECTURE Create a visual language that complements existing character and represents quality and timeless materials*



# PUBLIC REALM AND STREETScape



## PUBLIC REALM AND STREETScape DESIGN GOALS

PUBLIC REALM AND STREETScape One cohesive district that promotes safety and accessibility for visitors, pedestrians, and cyclists



**1** Bury overhead utility lines on primary streets or relocate to alleys.



**2** Provide 6-12 foot wide ADA compliant pedestrian friendly brick sidewalks (and secure easements as necessary).



**3** Utilize low limestone walls to ease grading challenges along ROW and accommodate needed sidewalk.



**4** Establish high canopy street trees lining the street and sidewalk where possible.



**5** Install a family of high quality pedestrian furnishings.



**6** Provide a mix of appropriate street and pedestrian lighting in the corridor.



**7** Implement consistent and appropriately-scaled wayfinding and district signage for people driving, biking, and walking.



**8** Strengthen the Uptown brand story with the identified material palette when applicable.



# STREETSCAPE FAMILY OPTIONS

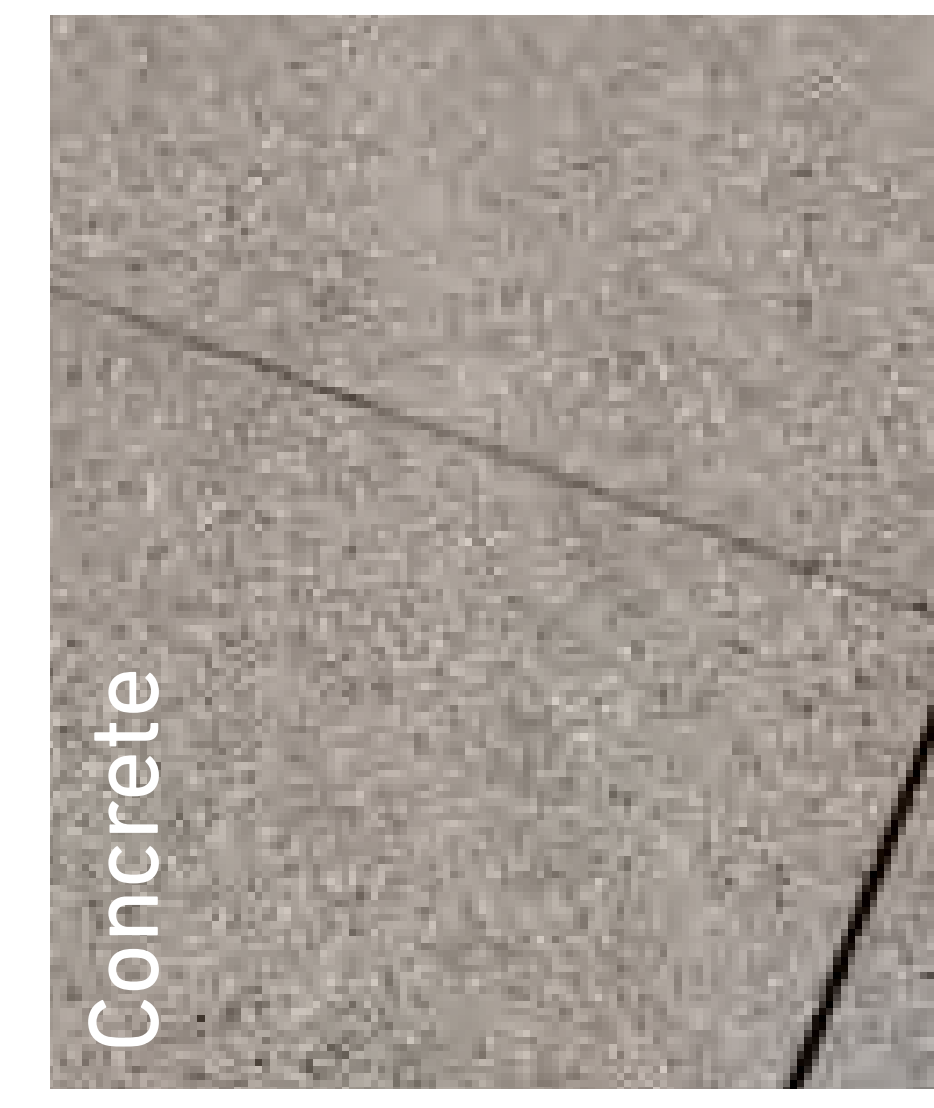
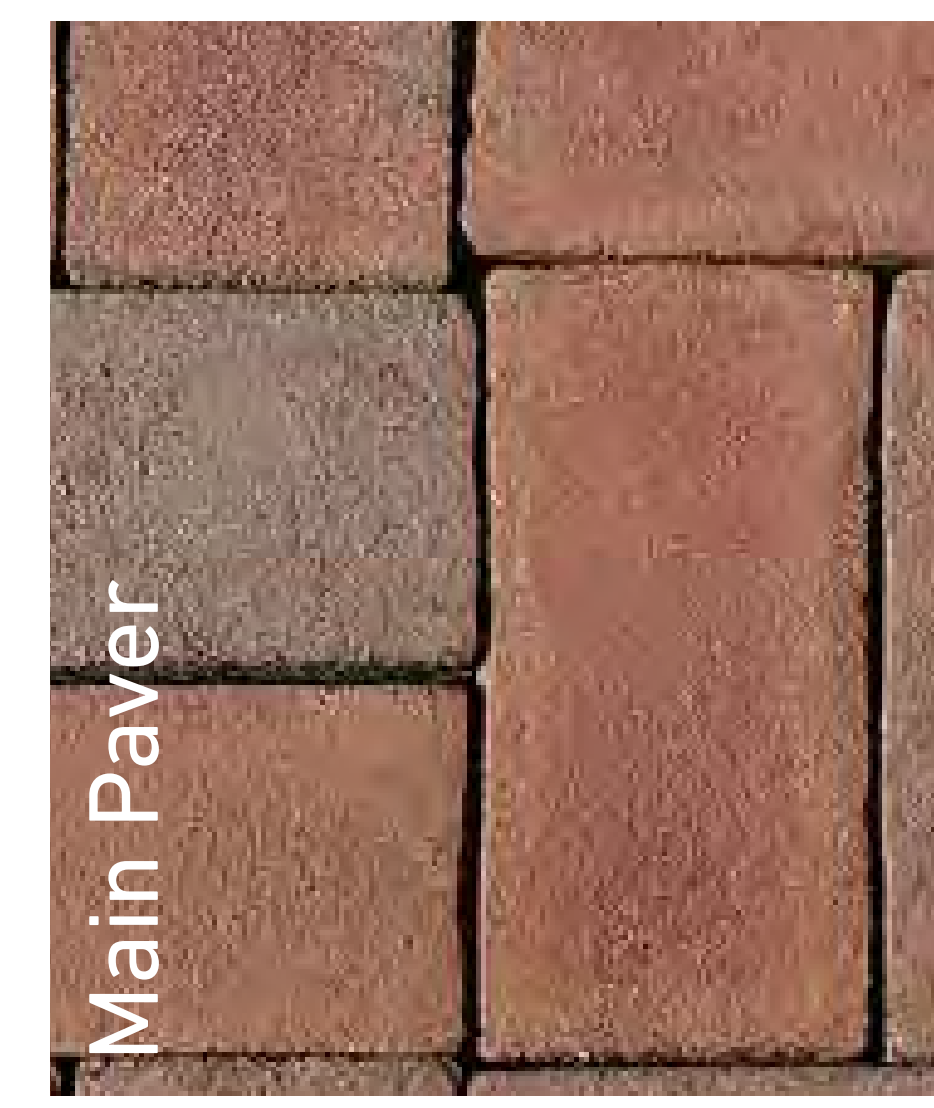
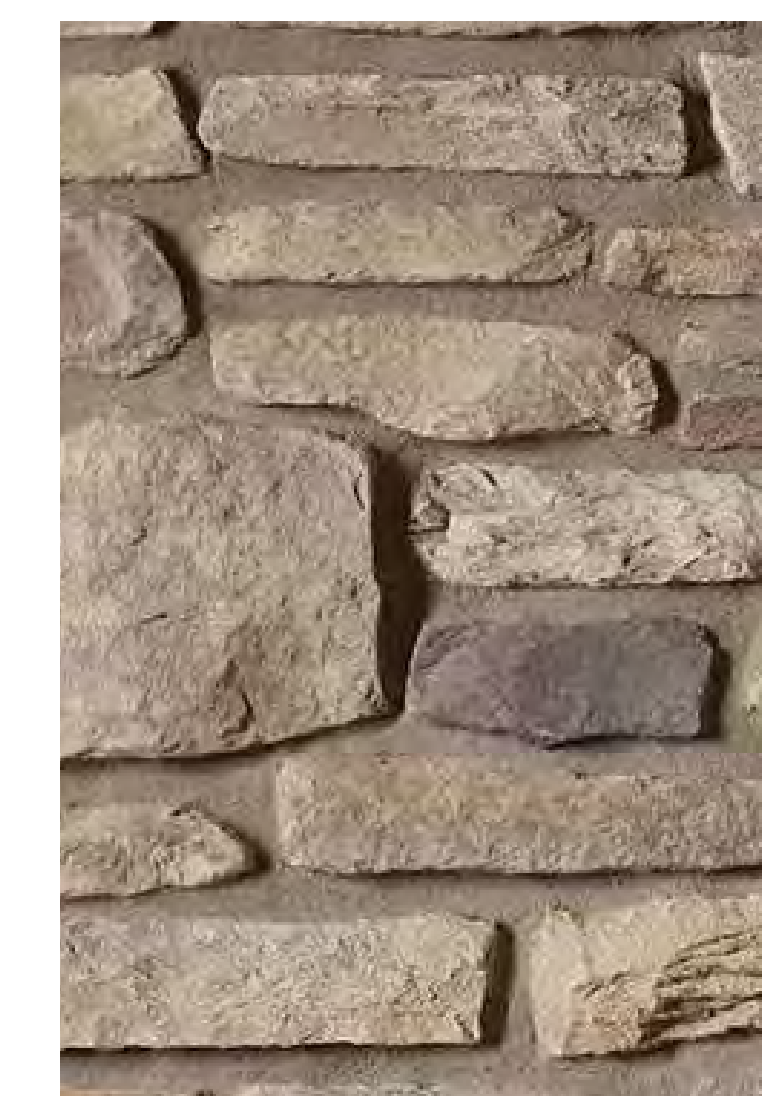
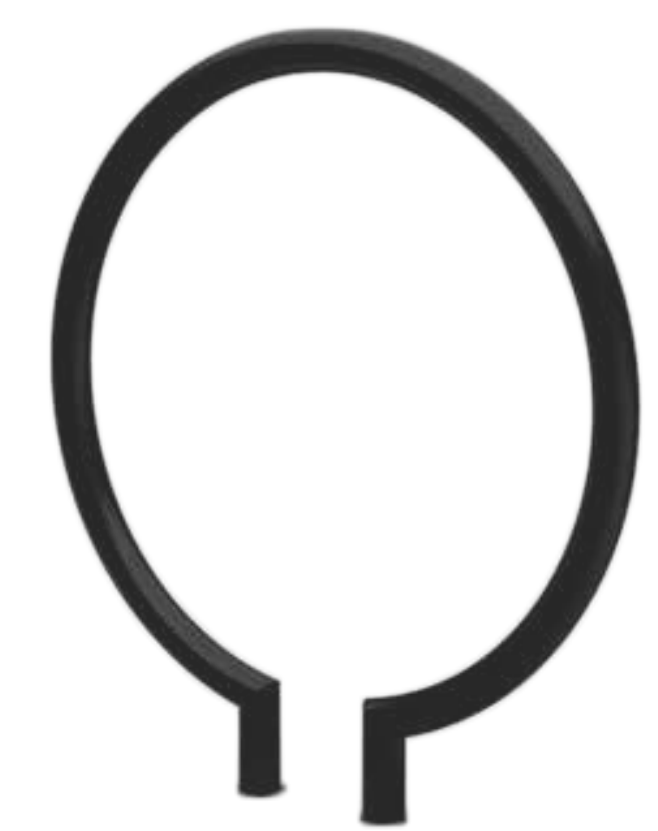
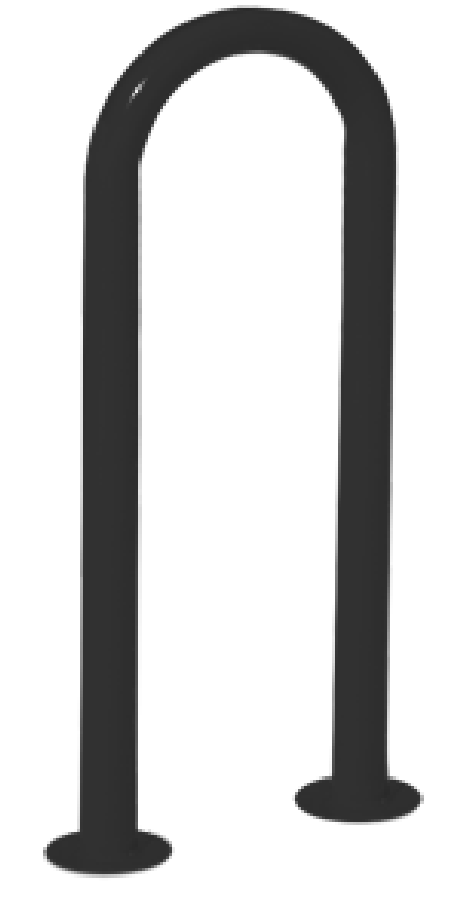
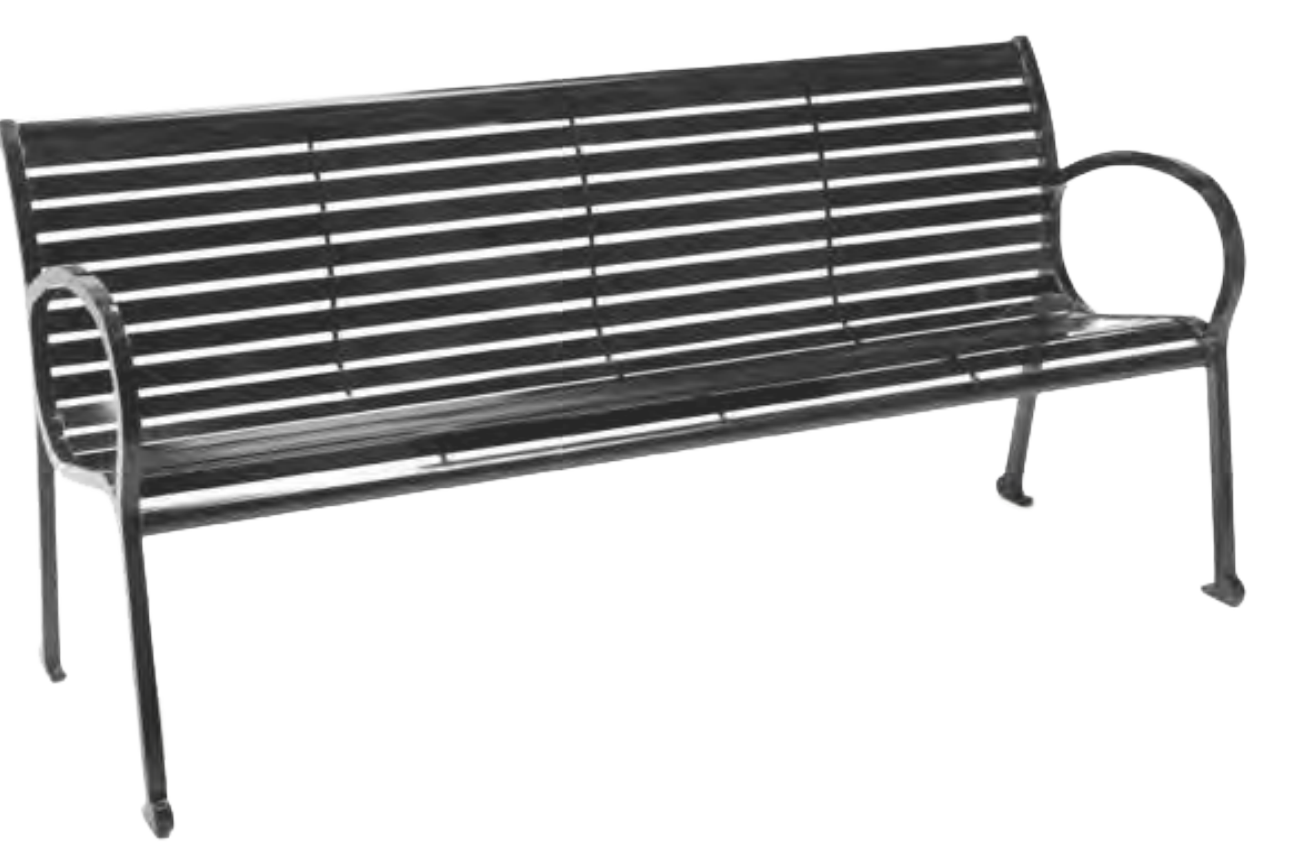
PUBLIC REALM AND STREETSCAPE One cohesive district that promotes safety and accessibility for visitors, pedestrians, and cyclists



FAMILY OPTION 1

FAMILY OPTION 2

FAMILY OPTION 3



Main Paver

Accent Paver

Concrete

Lighting

Benches

Litter

Bollards

Bike Racks

Stone Walls

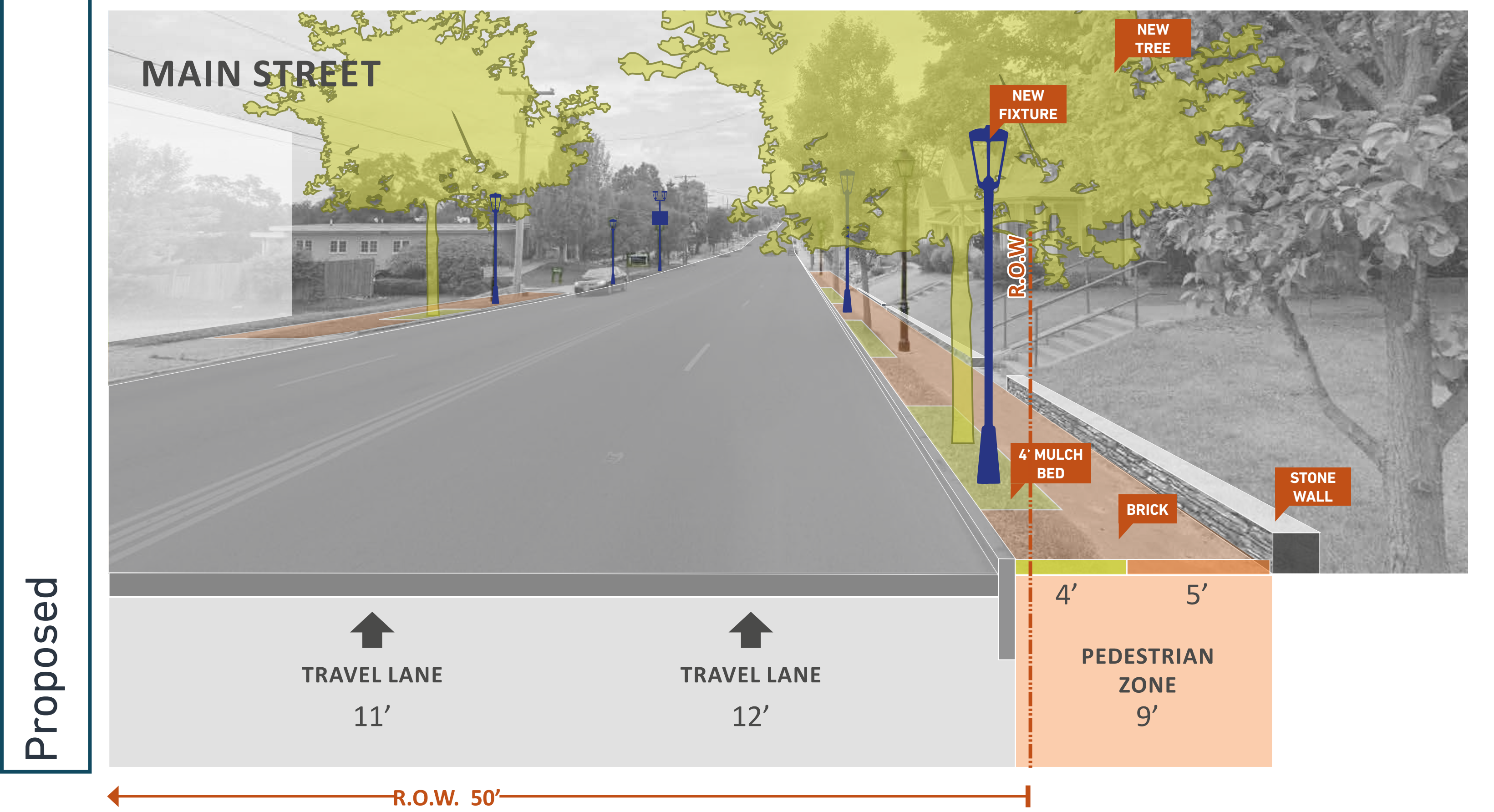
Hardscape





# FRANKLIN STREET AND MAIN STREET VISION

PUBLIC REALM AND STREETScape One cohesive district that promotes safety and accessibility for visitors, pedestrians, and cyclists



Existing

Proposed



# FRAMEWORK PLAN

*PUBLIC REALM AND STREETSCAPE One cohesive district that promotes safety and accessibility for visitors, pedestrians, and cyclists*

- Strategic Parking Plan
- Strategic Elimination of Curb Cuts
- Franklin and Main Streetscape
- Infill Examples

+/- 654 Total Shared Parking

**PARKING DISTRICT OUTLINE**



VIRGINIA AVENUE

WESTERFIELD DR

W FRANKLIN STREET

N MAIN STREET

E RIDGEWAY DRIVE

E FRANKLIN STREET

MAPLE AVE.



**PARKING**



# VIAS AND ALLEYS PLAN

PARKING *Safe, Easy, and Accessible Parking for visitors and residents*

- Strategic Parking Plan
- Strategic Elimination of Curb Cuts
- Franklin and Main Streetscape

+/- 622 Total Shared Parking

PARKING DISTRICT OUTLINE

VIRGINIA AVENUE

WESTERFIELD DR

W FRANKLIN STREET

N MAIN STREET

E RIDGEWAY DRIVE

E FRANKLIN STREET

MAPLE AVE





# FRAMEWORK PLAN

PARKING *Safe, Easy, and Accessible Parking for visitors and residents*

- Strategic Parking Plan
- Strategic Elimination of Curb Cuts
- Franklin and Main Streetscape
- Infill Examples

+/- 654 Total Shared Parking

PARKING DISTRICT OUTLINE

VIRGINIA AVENUE

WESTERFIELD DR

W FRANKLIN STREET

N MAIN STREET

E RIDGEWAY DRIVE

E FRANKLIN STREET

MAPLE AVE.





LIVE / WORK / PLAY



**NUTT HOUSE  
SIGNATURE  
RESTAURANT**

SINGLE FAMILY  
2 HOMES

SINGLE FAMILY  
1 HOME

MAPLE AVENUE

**COMMERCIAL  
+/-5,000 SF  
2-STORY**

E RIDGEWAY DRIVE

N MAIN STREET

E FRANKLIN STREET



**NORTH EAST QUADRANT**

*LIVE/WORK/PLAY Respond to market demand while being authentic to Uptown's history and retail energy*



# NORTH WEST QUADRANT

LIVE/WORK/PLAY Respond to market demand while being authentic to Uptown's history and retail energy

BOULEVARD

TOWNHOMES  
4 UNITS

COMMERCIAL  
+/-14,000 SF  
2-STORY

COMMUNITY  
GATHERING  
SPACE

W RIDGEWAY DRIVE

CROSSWALK  
AND MEDIAN

ON-STREET  
PARKING

CROSSWALK  
AND MEDIAN

N MAIN STREET

W FRANKLIN STREET







TOWNHOMES  
14 UNITS

COMMERCIAL  
+/-3,000 SF  
2-STORY

ON-STREET  
PARKING

CROSSWALK  
AND MEDIAN

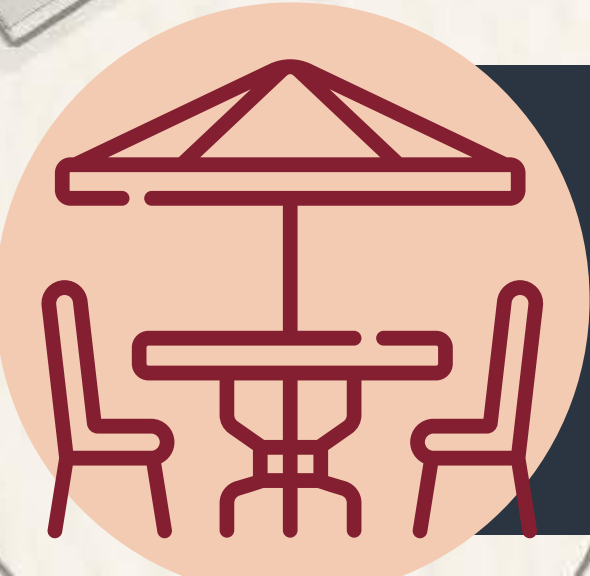
COMMERCIAL  
+/-9,000 SF  
2-STORY

CROSSWALK  
AND MEDIAN



S MAIN STREET

W FRANKLIN STREET



**SOUTH WEST QUADRANT**  
*LIVE/WORK/PLAY Respond to market demand while being authentic to Uptown's history and retail energy*