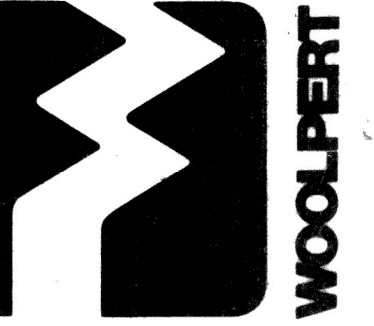




**WOOLPERT CONSULTANTS**  
 ARCHITECTURE • LANDSCAPE ARCHITECTURE  
 ENGINEERING • PLANNING • PHOTOGRAMMETRY

409 East Monument Avenue • Dayton, Ohio 45402-1226  
 513/461-5660



**STUBBS PARK  
 CONCESSION/  
 RESTROOM FACILITY**

DATES: 5/29/92  
 06/19/92  
 RE-BID 08/07/92  
 08/24/92

PROJECT NO.:  
 20-21-040860-01

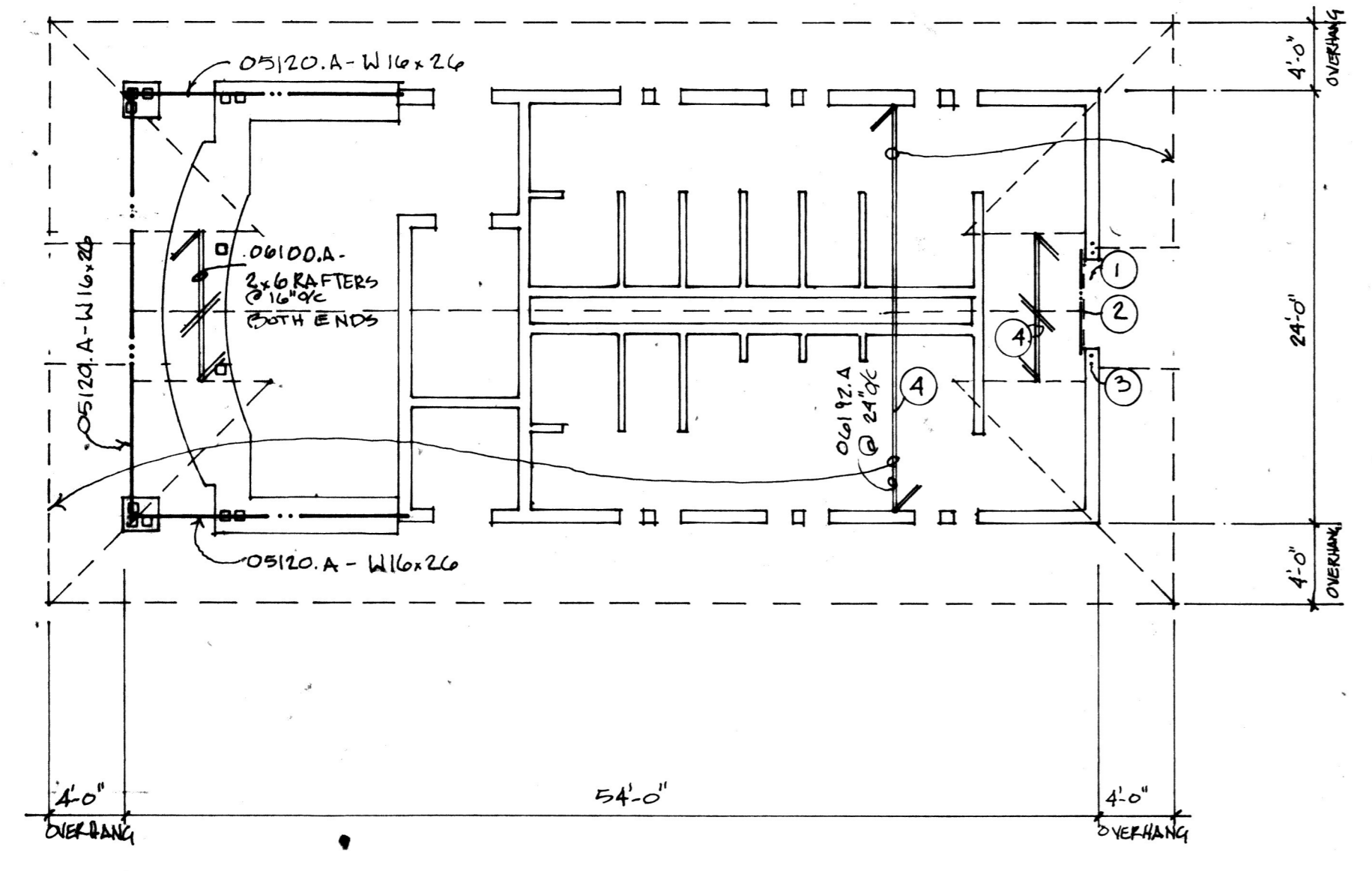
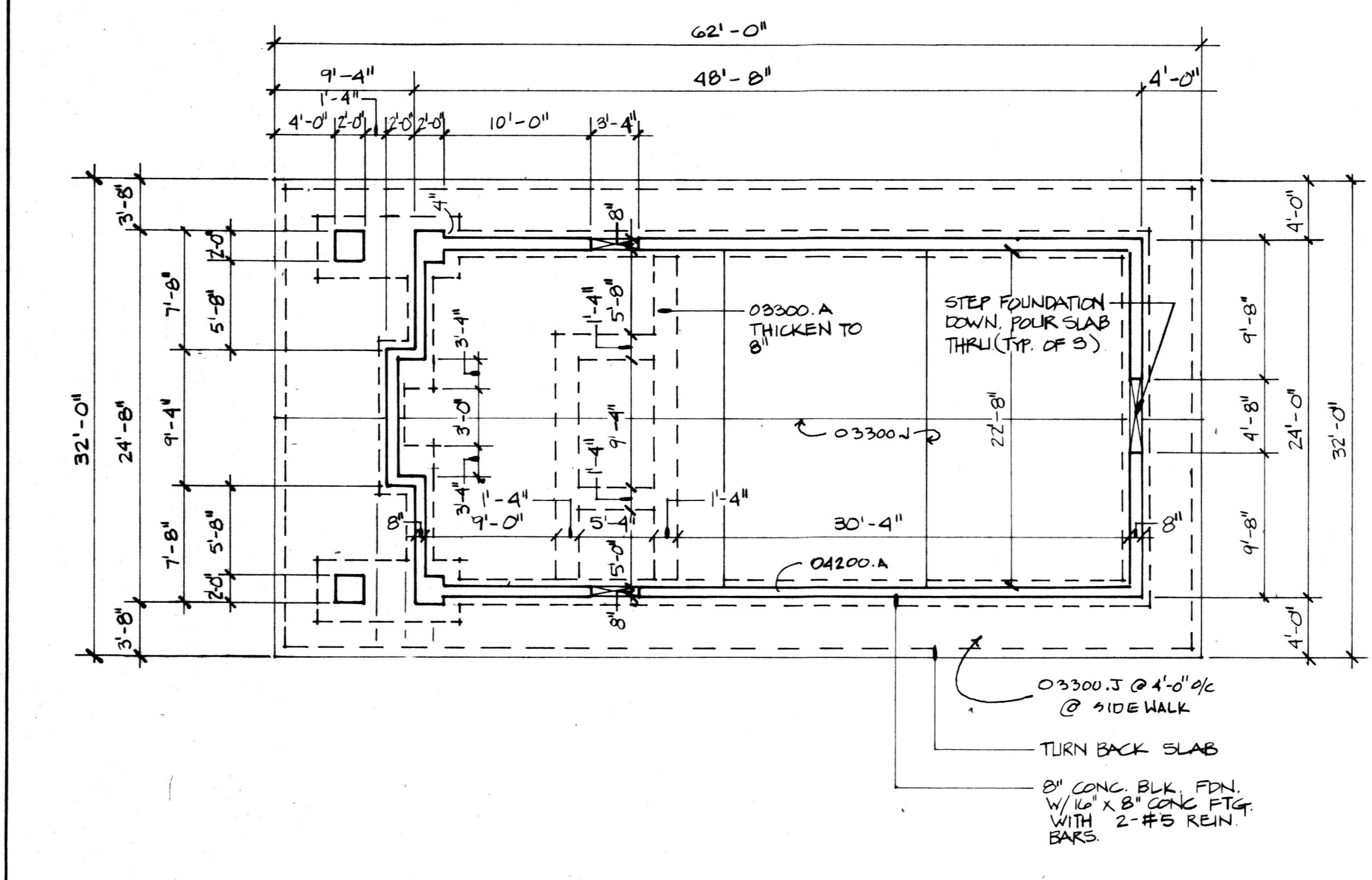
SHEET:  
**A1.1**

**MATERIAL NOTES**

- 03300 - CAST-IN-PLACE CONCRETE**
  - 03300.A CONCRETE SLAB.
  - 03300.J CONTRACTION (CONTROL) JOINT IN SLAB-ON-GRADE WITH 1/8" TO 1/4" WIDE INSERT X 1/4" OF SLAB DEPTH.
  - 03300.K CHEMICAL HARDENER FINISH.
  - 03300.P DESIGN MIX COMPRESSIVE STRENGTH AT 28 DAYS 3000 PSI, WITH AIR.
  - 03300.X BROOM FINISH.
  - 03300.Z FLOAT FINISH.
- 04200 - UNIT MASONRY**
  - 04200.A CONCRETE BLOCK, GRADE N, TYPE II; HOLLOW LOAD BEARING NORMAL WEIGHT PREFACED CONCRETE BLOCK; TRENDS/STON UNFILLED OR EQUAL.
  - 04200.A3 MASONRY CEMENT; TYPE N.
  - 04200.E VINYL SHEET FLASHING - 30 MIL PVC.
  - 04200.M PREMOULDED CONTROL JOINT STRIP.
  - 04200.Q CONTROL JOINT WITH SEALANT AND BACKER ROD.
  - 04200.W STEEL LINTELS.
  - 04200.Z GROUT.
- 04270 - GLASS UNIT MASONRY**
  - 04270.C HOLLOW GLASS BLOCK; TRANSLUCENT PATTERN - "ARGUS", BY PC GLASSBLOCK; SIZE 8"X8".
  - 04270.F PANEL ANCHORS; GLASS UNIT MASONRY MANUF. STANDARD.
  - 04270.O MORTAR; WHITE; WATER REPELLENT ADDITIVE.
- 05120 - STRUCTURAL STEEL**
  - 05120.A STEEL PLATES, SHAPES AND BARS.
  - 05120.B COLD-FORMED STEEL TUBING.
  - 05120.N WELDED CONNECTION
- 06100 - ROUGH CARPENTRY**
  - 06100.A LIGHT FRAMING; STANDARD GRADE.
  - 06100.P BRIDGING; WOOD.
  - 06100.U ELECTRICAL BACKING PANEL, FIRE RETARDANT TREATED PLYWOOD, APA C-PLUGGED, 15/32" THICK.
- 06192 - PREFABRICATED METAL-PLATE-CONNECTED**
  - 06192.A PRE-ENG. HWP TRUSSES @ 24" OC DESIGN BY MANUF. SUBMIT SHOP DRAWING FOR REVIEW.
- 08111 - STANDARD WOOD DOORS AND FRAMES**
  - 08111.A2 EXTERIOR BIRCH OR POPLAR DOOR 3/4" THICK PAINT.
  - 08111.B FRAMES, WELDED UNIT TYPE; GALV. FOR EXTERIOR USE; 14 GA.
- 08305 - ACCESS DOORS**
  - 08305.A ACCESS DOORS, 18 GA. PAINTED STEEL FRAME WITH 14 GA. PAINTED STEEL DOOR. SCREW DRIVER OPERATED CAMLOCK.
- 08710 - DOOR HARDWARE**
  - 08710.A HINGES.
  - 08710.D LOCK CYL.; DEADBOLT.
  - 08710.E LOCK SET.
  - 08710.F BOLT; ON INTERIOR USE FOR HOLD OPEN, RECEIVER IN SIDEWALK.
- 10425 - SIGNS**
  - 10425.A 6x6 PICTOGRAM RESTROOM SIGN WITH 3x6 TEXT SIGN WITH 5/8" FULL CAPS TACTILE TEXT-RAISED 1/2" SAN SERIF TYPE, GRADE 2 BRILLE. SUBMIT SHOP DRAWING FOR REVIEW.
- 10800 - TOILET AND BATH ACCESSORIES**
  - 10800.B TOILET TISSUE DISPENSER; 1 PER TOILET.
  - 10800.E COMBINATION TOWEL/DISPENSER/WASTE RECEPTACLE UNIT.
  - 10800.G GRAB BAR.
  - 10800.K SOAP DISPENSER; 1 PER LAV.
  - 10800.U MOP AND BROOM HOLDER.
- 11400 - FOOD SERVICE EQUIPMENT**
  - 11400.A CAST LAMINATE COUNTERS; BY CORIAN.

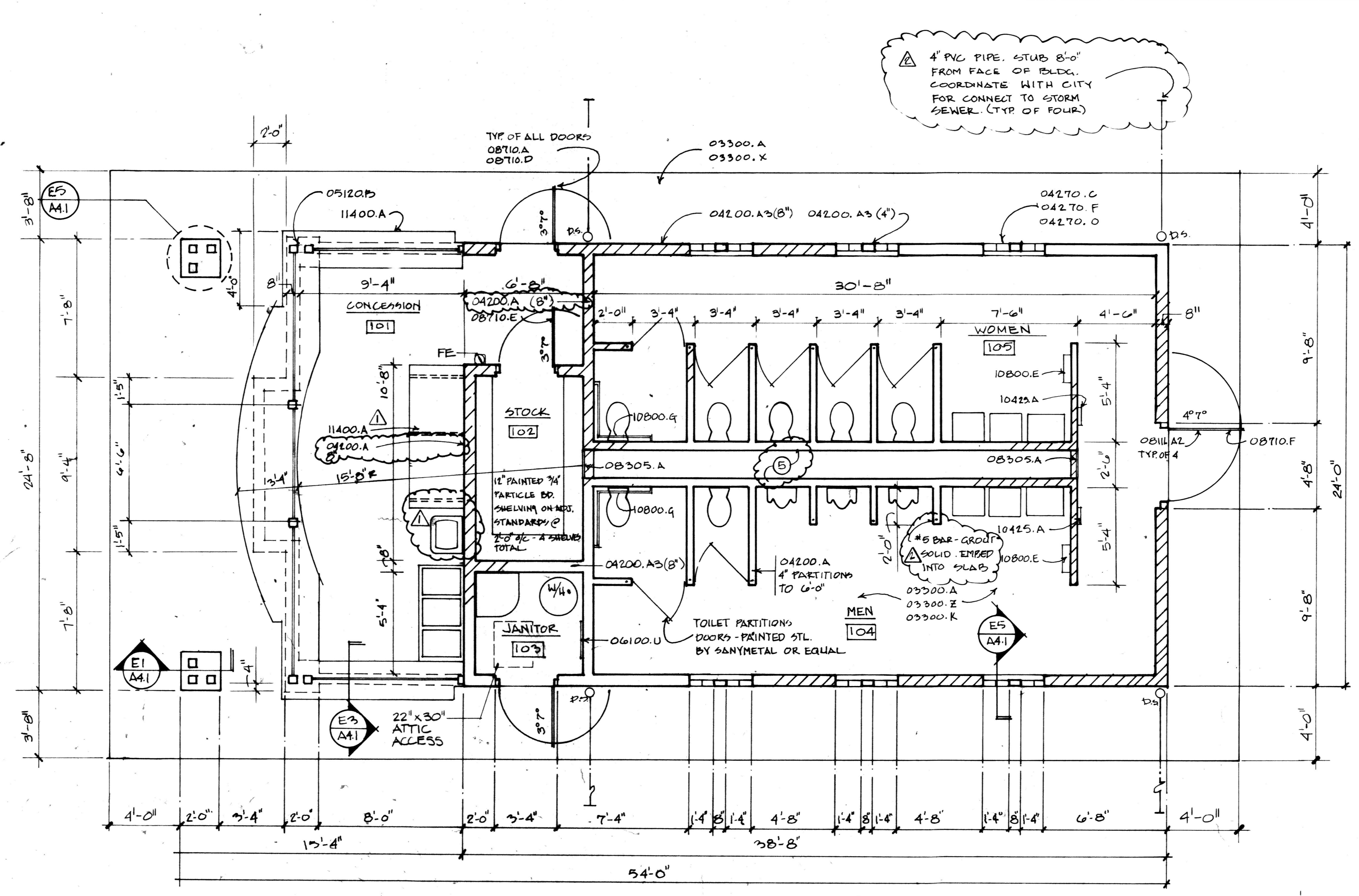
**DRAWING NOTES**

1. MASONRY LINTEL WITH 2 #5 BARS AT 24" O/C X 2'-0" LONG. GROUT THREE COURSES.
2. 2 X 10 LEDGER WITH 1/2" DIA. EXPANSION BOLTS X 6" LONG AT 24" O/C. CONTINUE PLYWOOD DECKING UNDER CONVENTIONAL FRAMING.
3. USE 2 #4 BARS IN FIRST 2 CELLS WITH #3 TIES AT 16" O/C.
4. PROVIDE BOUNDARY NAILING AT ALL AREAS OF BUILDING WHERE TRUSSES/RAFTERS MEET BEARING CONDITIONS. USE SIMPSON CONNECTORS TO CONNECT ALL TRUSSES/RAFTERS TO BEARING PLATS. PROVIDE CONNECTION SHOP DRAWING FOR REVIEW.
5. MASONRY CONTRACTOR SHALL GROUT AND ALL 4" MASONRY WALLS THAT PROVIDE SUPPORT FOR WALL HUNG PLUMBING FIXTURES. GROUT SHALL HAVE MIN. STRENGTH OF 3000 PSI.



**B4 FOUNDATION PLAN**  
 1/8"=1'-0"

**B1 ROOF FRAMING PLAN**  
 1/8"=1'-0"

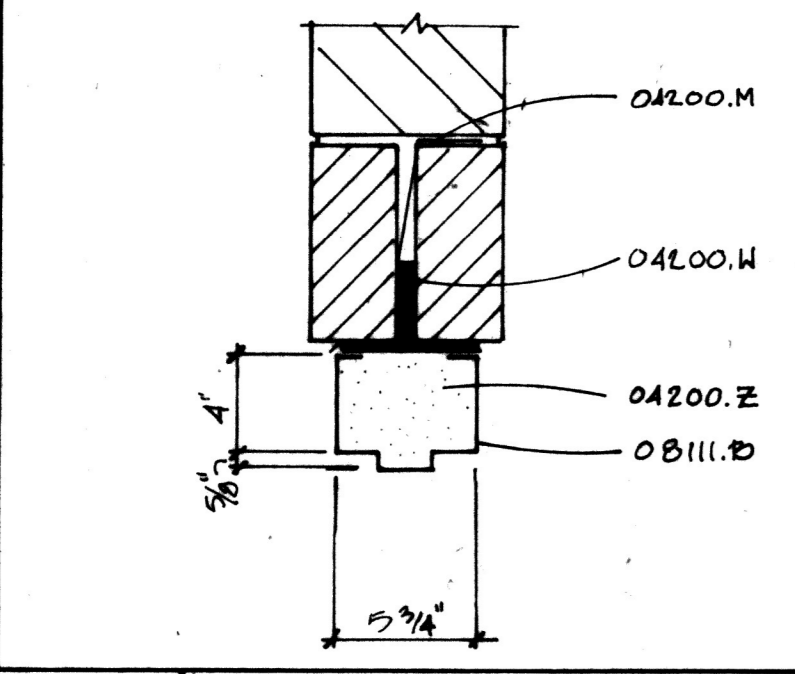


**E2 FLOOR PLAN**  
 1/4"=1'-0"

**E1 SILL**  
 1-1/2"=1'-0"

**D1 JAMB**  
 1-1/2"=1'-0"

**C1 HEAD/JAMB**  
 1-1/2"=1'-0"



**B1 ROOF FRAMING PLAN**  
 1/8"=1'-0"