

I-675 - WILMINGTON PIKE



PROJECT NEED

The I-675 and Wilmington Pike Interchange Project consists of two studies analyzing the existing and projected traffic at the I-675 and Wilmington Pike Interchange and the surrounding local roadway network, which serves a number of large employers, residents and a growing commerce corridor that is part of Main Street to WPAFB. The Dayton Region Priority and Advocacy Committee (PDAC) has named this project one of the top priorities for funding.



COMMUNITY IMPACT

The I-675 and Wilmington Pike Interchange serves major employment and commercial centers, including Wright-Patterson Air Force Base, Sinclair College and Premier Health, as well as the Cornerstone Development shopping and entertainment district. Growing congestion issues, along with continued opportunity for economic growth in the area, has prompted local interests to consider improvements to both the interchange and the local roadway network to support the City of Centerville, Sugar Creek Township, Greene County, the City of Kettering and Montgomery County.

RECENT GROWTH IN REGION

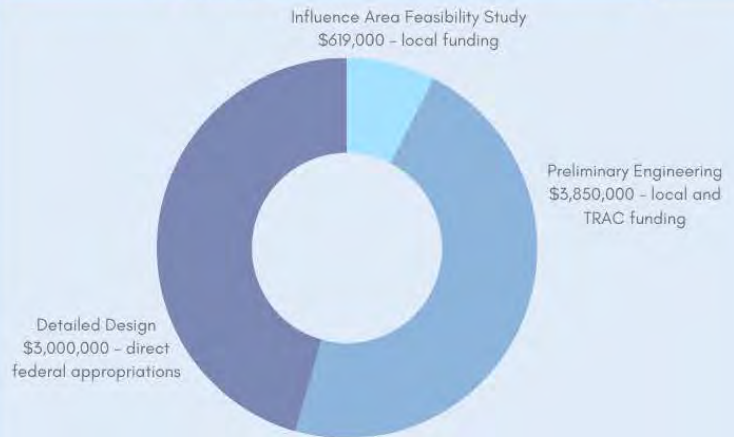
- Wright-Patterson Air Force Base
- Miami Valley Hospital South
- Sinclair College - Centerville Campus
- Cincinnati Children's Hospital - Centerville
- Cornerstone of Centerville

PROJECT MEETINGS

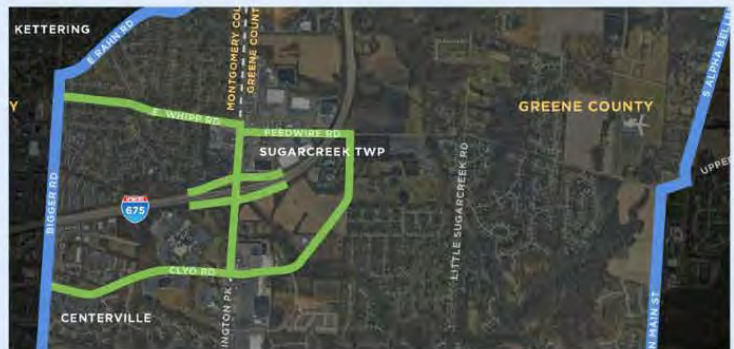
- July 13** | 10:00 a.m. - 12:00 p.m. Stakeholder Meeting
- July 13** | 5:00 - 7:00 p.m. Public Involvement Meeting

Sinclair College - Centerville Campus
Virtual option available through project website.

FUNDING SOURCES



I 675 - WILMINGTON PIKE CURRENTLY



CONTACT: Crystal Corbin, Executive Director
 Montgomery County Transportation Improvement District
 Office: (614) 530-0884
ccorbin@mctid.org

Montgomery County TID
 Live Project Website





I-675/Wilmington Pike Interchange Project – Executive Summary

The intersection of I-675 and Wilmington is a key gateway into Montgomery and Greene Counties. Businesses and institutions thrive at this interchange, which enhances the quality-of-life experience for those who reside in Centerville, Sugarcreek Township, Kettering, Bellbrook and other communities nearby. Public infrastructure is also critical for Miami Valley Hospital South, Sinclair Community College, Centerville and Bellbrook-Sugarcreek Schools, Cornerstone and Sugarcreek Plaza business developments and first responders including police, fire and public works.

This key intersection is the “Main Street to Wright-Patterson...”
- United States Representative Mike Turner

City of Centerville 2018 – 2023 Strategic Plan: Goal 2 – Strategy 2 – Adopt a suite of plans, studies and other documents to direct future land use and infrastructure decision making.

- *Implementation Step: Participate in a planning effort to comprehensively evaluate current and future traffic conditions in and around the I-675/ Wilmington Pike Interchange. Determine a suite of potential countermeasures and sources for possible funding.*

City of Centerville 2023 – 2028 Strategic Plan: Goal 3 – Strategy 3 – Develop and implement strategies to direct future land use policies, economic development and infrastructure investment.

- *Implementation Step: Align resources, partners and schedule to ensure a start date for construction of the Wilmington Pike/I-675 Interchange Project.*

	<u>1999</u>	<u>2023</u>	
I-675/WP northbound ramp traffic per day	9,800	13,500	+ 40%
I-675/WP northbound ramps traffic per day	6,800	9,100	+ 35%
Employees at WPAFB	19,000	35,000	+ 84%

Engaged Partners through Letters of Support:

- | | |
|--|---|
| <ul style="list-style-type: none"> - Dayton Development Coalition - South Dayton Metro Chamber of Commerce - City of Kettering - Montgomery County Transportation Improvement District - Bellbrook Sugarcreek Park District - Ohio Dept. of Commerce - Sinclair College - Ohio Representative Niraj Antani | <ul style="list-style-type: none"> - Dayton Area Chamber of Commerce - Miami Valley Regional Planning Commission - City of Bellbrook - Ohio Dept. of Transportation - Kettering Health Network - Miami Valley Hospital - U.S. Representative Mike Turner - Oberer Companies |
|--|---|

